

MACPHERSON MALL

[www.huttonsgroup.com](http://www.huttonsgroup.com)



freehold INVESTMENT • lifestyle EXPERIENCE

INVEST IN AN  
EXCEPTIONAL  
FREEHOLD  
RETAIL SPACE

[www.huttonsgroup.com](http://www.huttonsgroup.com)



# M<sup>2</sup>

MACPHERSON MALL

www.huttonsgroup.com





# STAND OUT AT THIS PRO **M**INENT JUNCTION

MacPherson Mall is a new lifestyle shopping mall located at the prominent **ALJUNIED/MACPHERSON ROAD** junction. A majestic 9-storey business hotel with approximately 300-rooms managed by an international hotel group will sit atop **M**.

Targeted visitor profile:

**HOTEL** GUESTS, **Working Community,  
Residents, Students & more...**

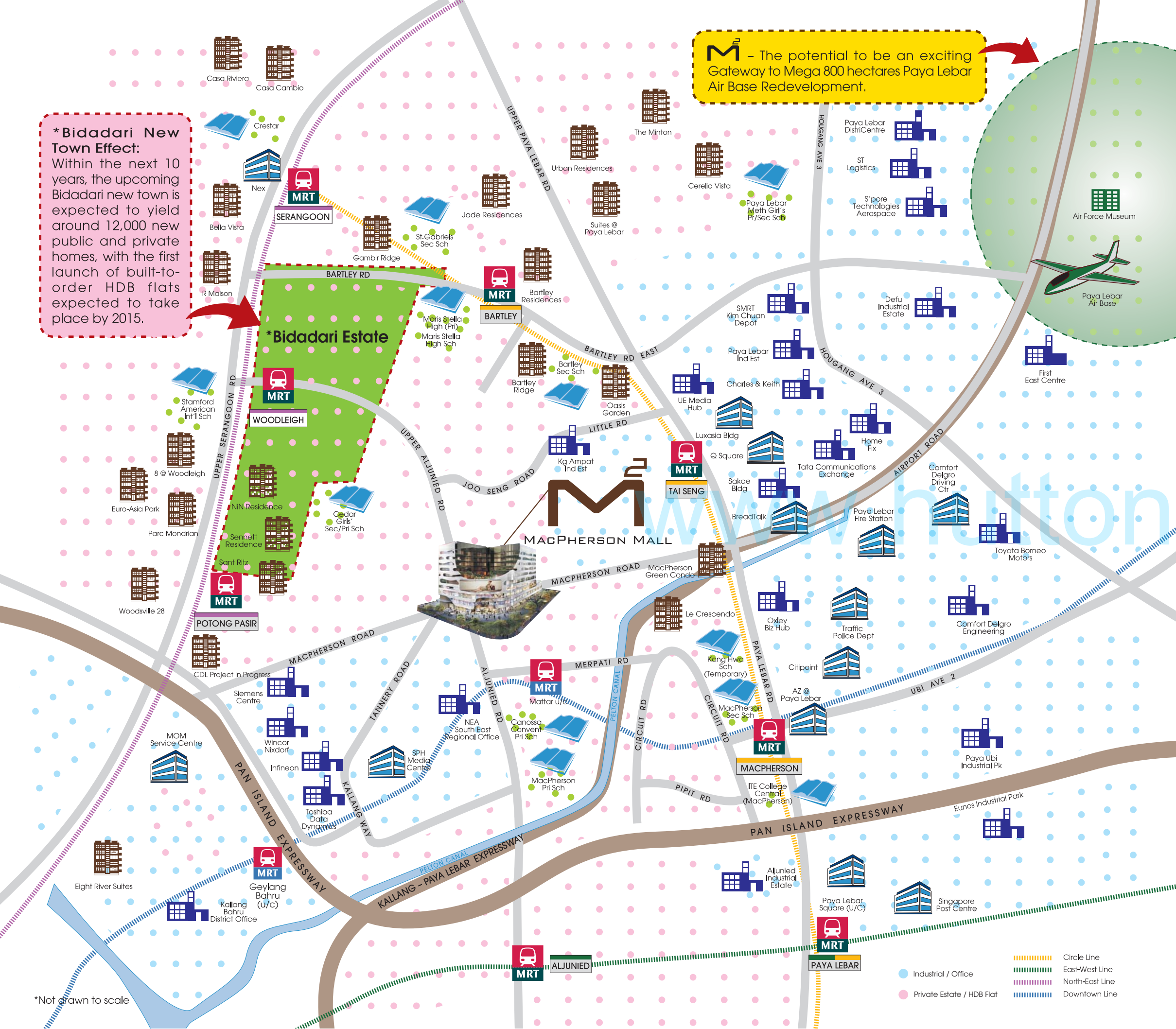
Potential Investors will be attracted by  
Strong Rental Demand at this UNIQUE LOCATION.

**BUSINESS OWNERS** can control  
**Rising Rental Costs**  
by INVESTING in a space of their own.

Designed by award-winning architectural firm A D LAB Pte Ltd, winners of the Singapore Institute of Architects (SIA) Architectural Design Awards 2010, Residential Category.

Warren Liu, the principle director of A D LAB Pte Ltd won a place in "20 Under 45: The Next Generation", an initiative by URA to recognise Singapore's leading young architects.





# IMMERSE IN A HIGH CATCHMENT AREA

Located strategically at the key junction of MacPherson Road and Upper Aljunied Road, **M** offers unparalleled convenient vehicular and public transport access. With the Mattar Station on the Downtown Line located a few minutes away and the Tai Seng Station on the Circle Line also located a few minutes' drive away, **M** will be equally accessible by MRT.

When completed, **M** will take centre stage in a high growth area where 2 new major catalytic projects will take shape: Development of Bidadari New Town which is expected to yield 12,000 new public and private homes and the redevelopment of the Paya Lebar Air Base. The government recently announced plans to relocate the Paya Lebar Air Base, making way for the development of new homes, offices and factories. This will also result in height restrictions being removed in the area around the airbase. This massive 800 hectare new redevelopment is larger than Bishan or Ang Mo Kio and will lead to an exciting rejuvenation of the surrounding area. **M** is about 2.3 km away from the Paya Lebar Air Base and will potentially be the gateway to this mega Paya Lebar Air Base Redevelopment.

In the next few years, many well-known residential developments such as Bartley Residences, Bartley Ridge and Sennett Residence will be completed. **M** will be able to provide residents in these developments an alternative shopping mall to visit. **M** will also be able to provide guests staying in the estimated 300-room new business hotel with a selection of retail attractions; ranging from F&B and fashion outlets to computer and consumer electronic stores, spas and grooming services.

Many international MNCs such as Siemens, Infineon, Toshiba and SPH have business operations in the vicinity. Hence **M** will also benefit from the surrounding business and corporate communities. **M** can expect to play host to business lunches and corporate entertainment events. **M** will be an ideal location for the lunchtime office crowd to come and have a quick meal or do some lunchtime shopping. Alternatively, after a tiring day at the office, **M** can also provide a place for office workers to unwind in the evenings.





# MAGICAL MOMENTS TO LIVE BY

## Morning



Wake up to the aroma of a tempting breakfast



Meetings made easy at the nearby cafe



## Afternoon



Eat, shop and splurge... a perfect way to start the afternoon



Indulge in a pampering treat or two while your children learn something new



## Evening



Catch up on the latest tweets that you have missed while sharing culinary delights



Relax and ease away the tensions of the day with friends







# REMARKABLE BUSINESS OPPORTUNITIES AWAIT YOU

- Over 80 units provide a numerous variety of attractions to the mall, allowing for a good mix of RETAIL SHOPS, F&B OUTLETS, EDUCATIONAL CENTRES, PAMPERING SPAS, NAIL SALONS AND AN ARRAY OF AMENITIES & SERVICES.
- An open podium at level 2 lets shoppers enjoy good visibility of level 3 and all its attractions.
- More than 40% of floor space has been reserved for F&B OUTLETS, ensuring returning visitors to 







[www.huttonsgroup.com](http://www.huttonsgroup.com)

**M**AMAZING  
DINING DELIGHTS



\*Intended F&B mix

**M**MOMENTS OF  
SHOPPING DEFINED



\*Intended retail mix

**M**MULTITUDE OF  
SERVICES IN ONE LOCATION



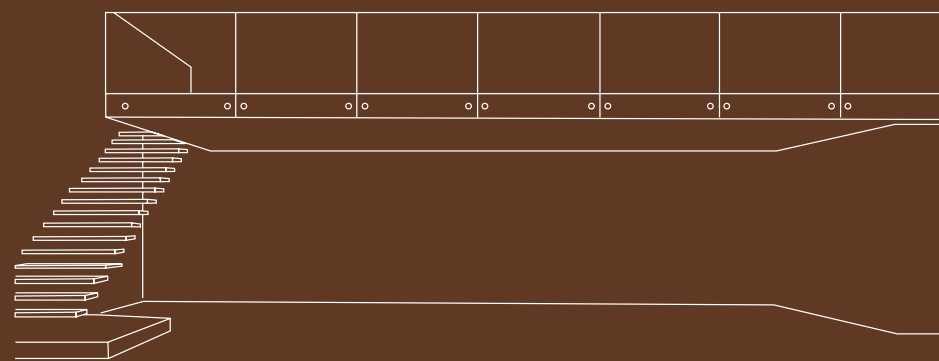
\*Intended services mix



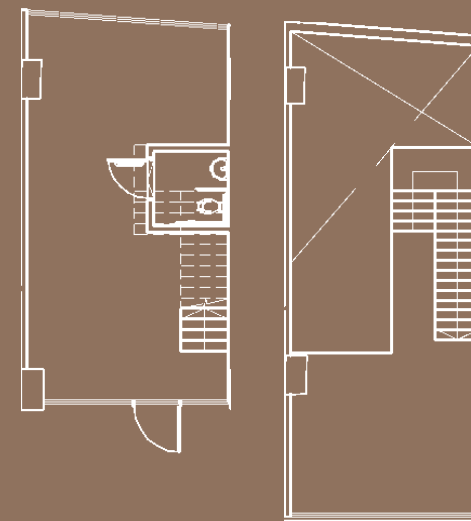


# IMPRESSIVE LOFT-IN-SHOPS DESIGNED FOR YOU

6 unique loft-in-shops designed for You  
Your choice of 1119 sqft to 1615 sqft of shop space  
Ideal for retail activities

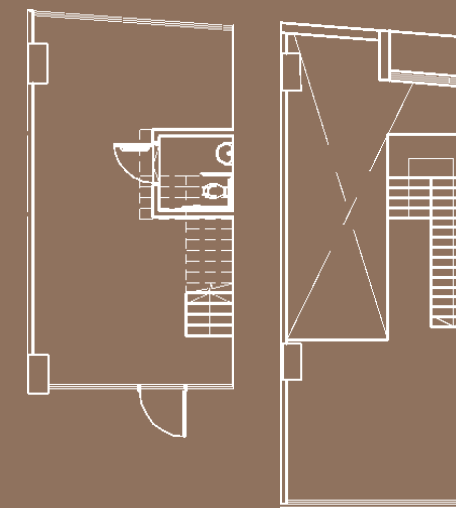


#01-10  
1238 sqft



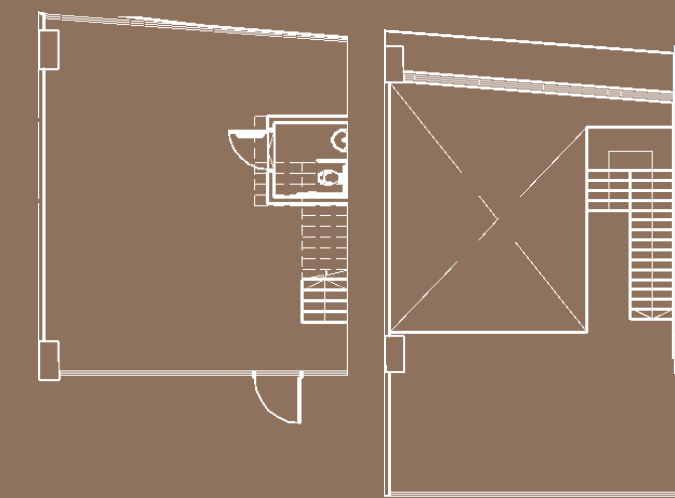
Storey 1 Storey 2

#01-11  
1173 sqft



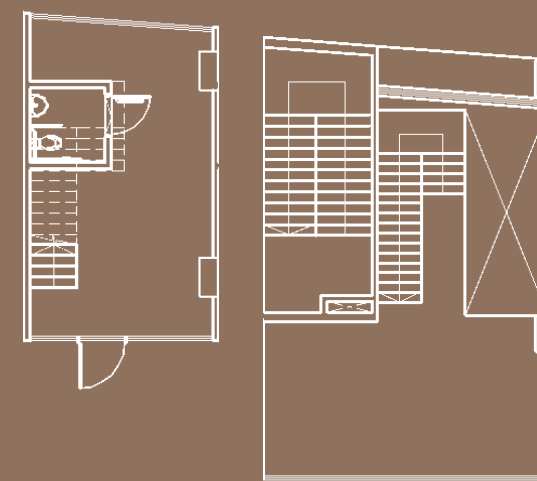
Storey 1 Storey 2

#01-12  
1615 sqft



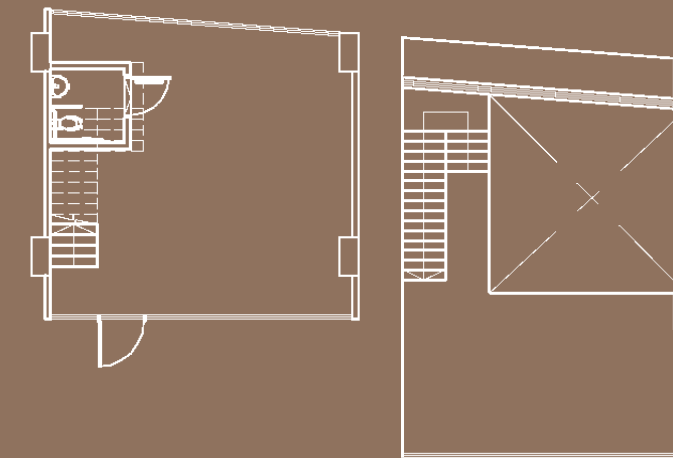
Storey 1 Storey 2

#01-13  
1119 sqft



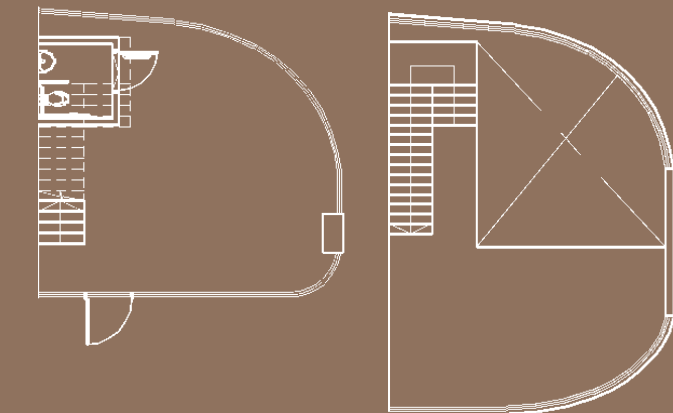
Storey 1 Storey 2

#01-14  
1346 sqft



Storey 1 Storey 2

#01-15  
1292 sqft



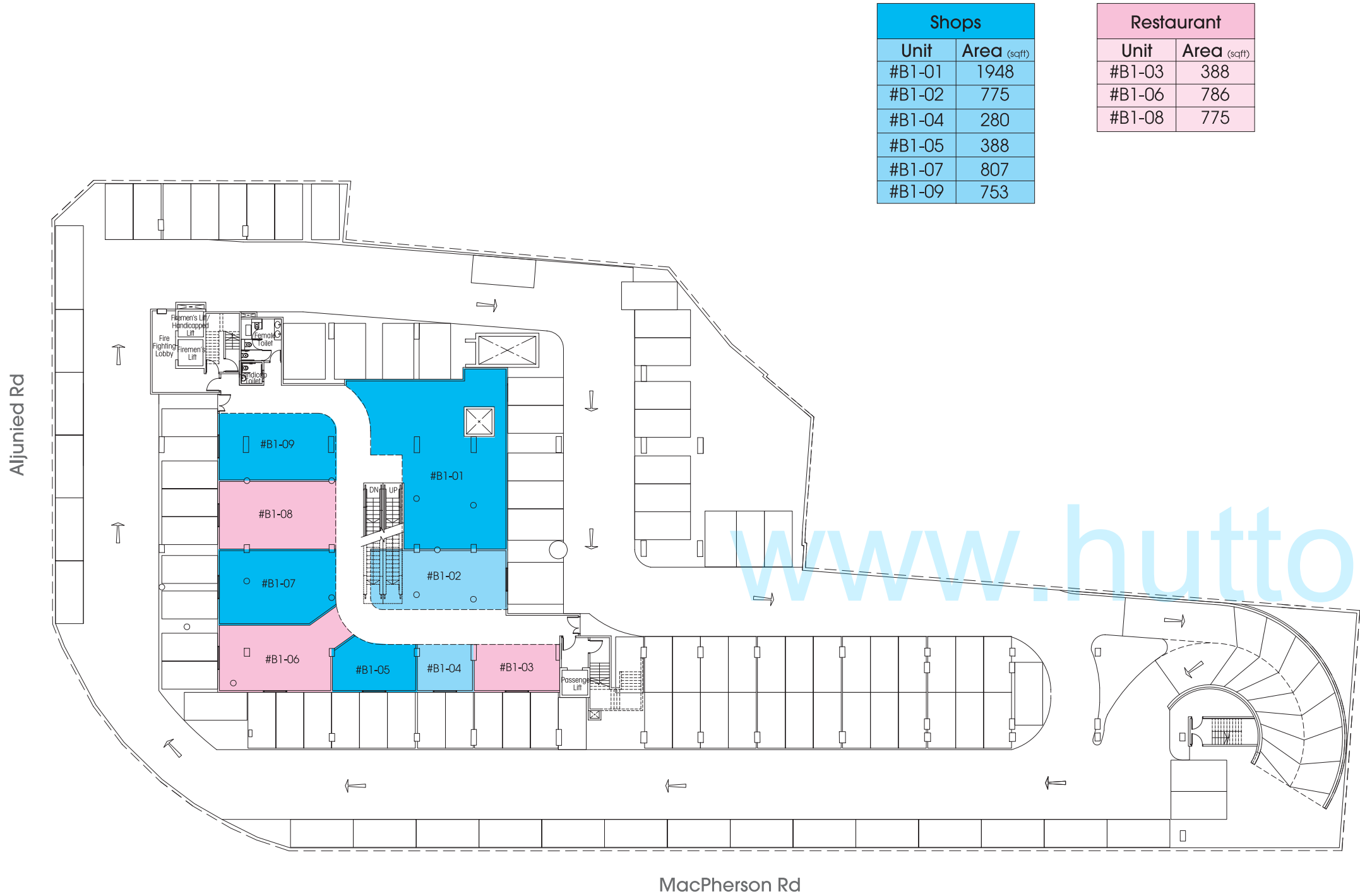
Storey 1 Storey 2

## LOFT-IN-SHOPS

Note: Unit area includes air-con ledge, except:  
i) Units (#01-10, #01-11, #01-12, #01-13, #01-14 & #01-15) include air-con ledges and loft's voids  
ii) Units (#03-01, #03-02 & #03-03) include air-con ledges, advertisement panel ledges and advertisement panel voids



BASEMENT



Note: Unit area includes air-con ledge, except:  
i) Units (#01-10, #01-11, #01-12, #01-13, #01-14 & #01-15) include air-con ledges and loft's voids  
ii) Units (#03-01, #03-02 & #03-03) include air-con ledges, advertisement panel ledges and advertisement panel voids

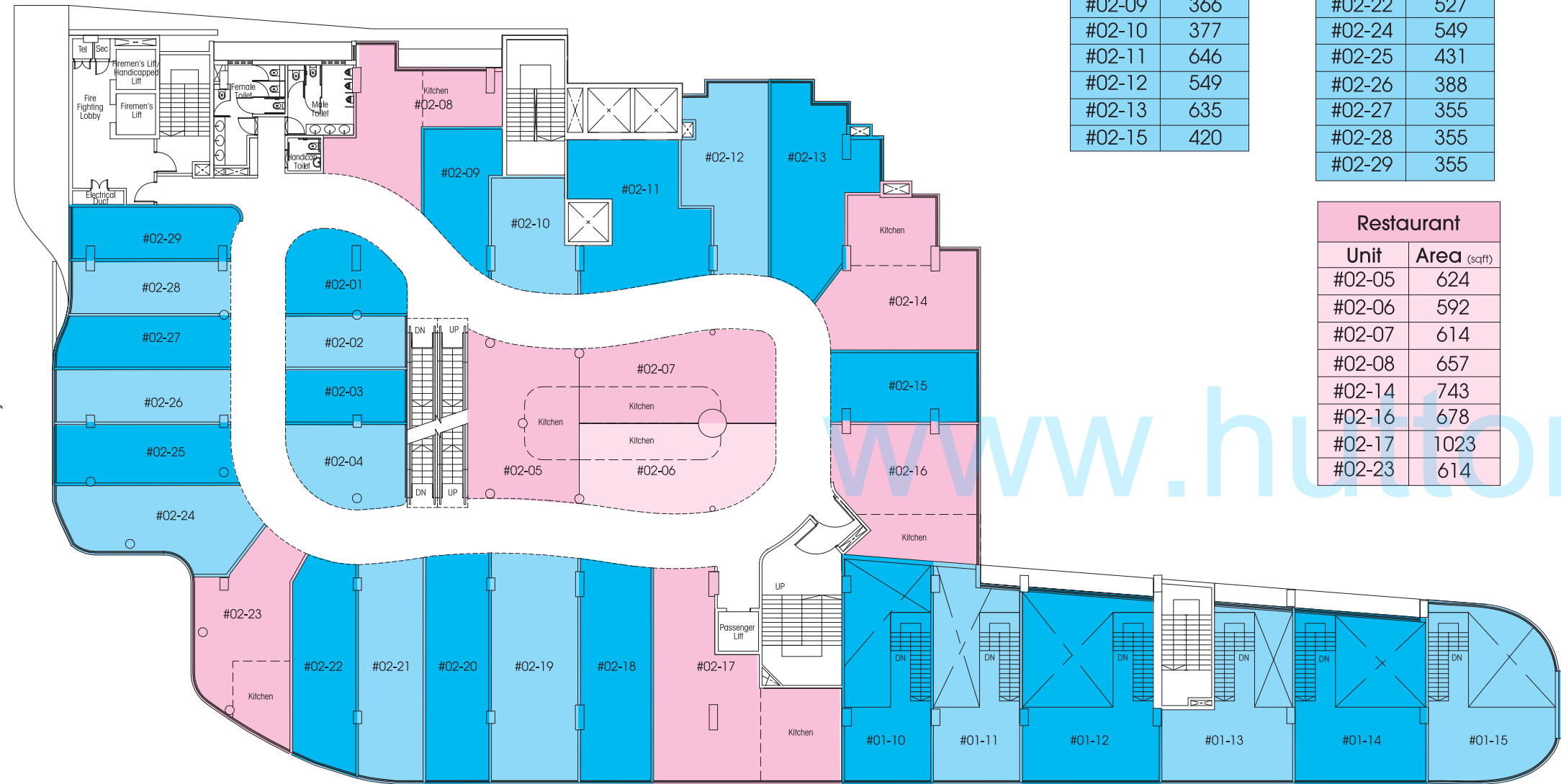
1ST STOREY



Note: Unit area includes air-con ledge, except:  
i) Units (#01-10, #01-11, #01-12, #01-13, #01-14 & #01-15) include air-con ledges and loft's voids  
ii) Units (#03-01, #03-02 & #03-03) include air-con ledges, advertisement panel ledges and advertisement panel voids



Aljunied Rd



Shops	
Unit	Area (sqft)
#02-01	355
#02-02	269
#02-03	291
#02-04	366
#02-09	366
#02-10	377
#02-11	646
#02-12	549
#02-13	635
#02-15	420

Shops	
Unit	Area (sqft)
#02-18	592
#02-19	753
#02-20	560
#02-21	570
#02-22	527
#02-24	549
#02-25	431
#02-26	388
#02-27	355
#02-28	355
#02-29	355

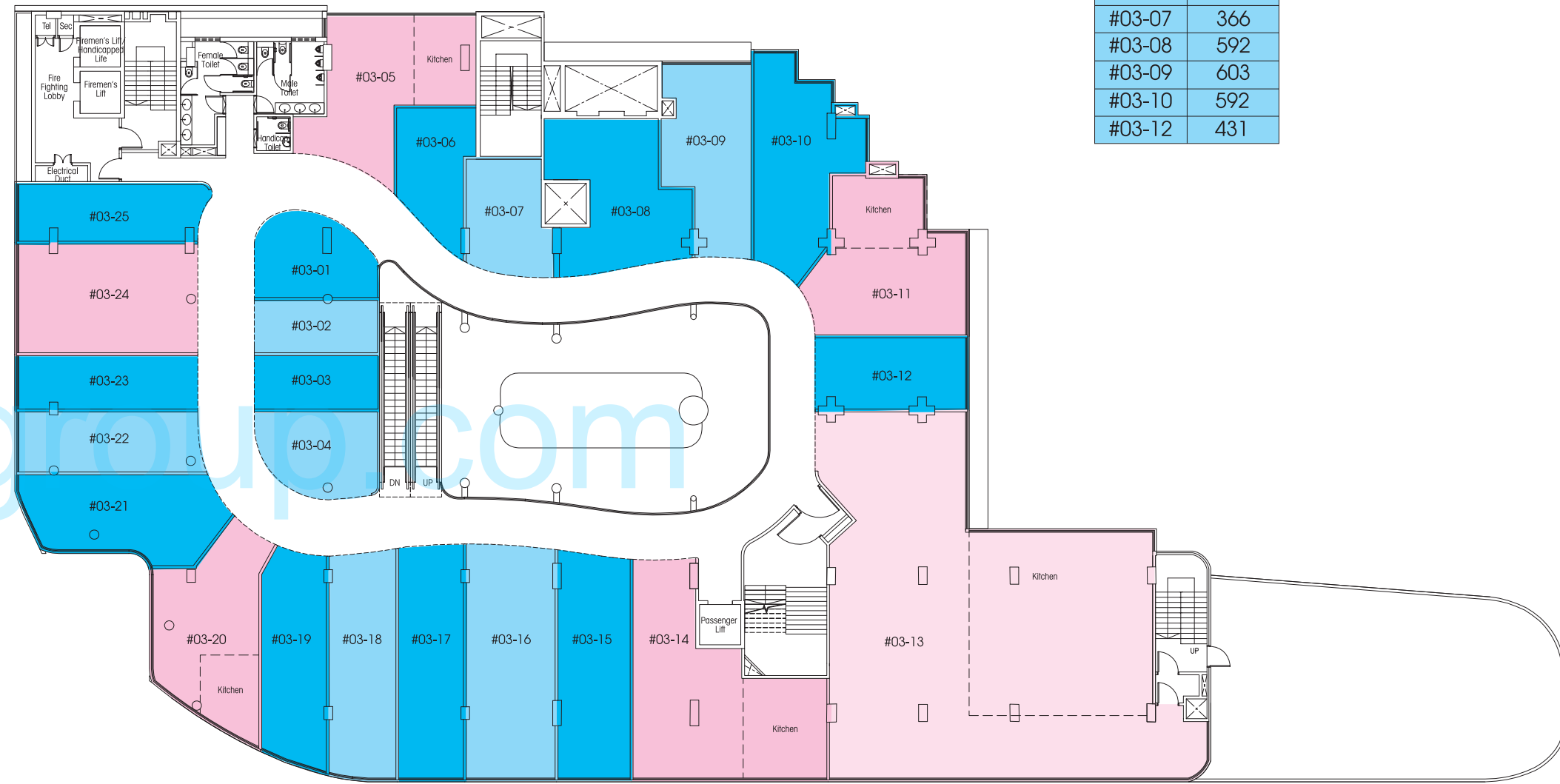
Restaurant	
Unit	Area (sqft)
#02-05	624
#02-06	592
#02-07	614
#02-08	657
#02-14	743
#02-16	678
#02-17	1023
#02-23	614

MacPherson Rd

## 2ND STOREY

- Note: Unit area includes air-con ledge, except:
- Units (#01-10, #01-11, #01-12, #01-13, #01-14 & #01-15) include air-con ledges and loft's voids
  - Units (#03-01, #03-02 & #03-03) include air-con ledges, advertisement panel ledges and advertisement panel voids

Aljunied Rd



Shops	
Unit	Area (sqft)
#03-01	409
#03-02	377
#03-03	398
#03-04	377
#03-06	355
#03-07	366
#03-08	592
#03-09	603
#03-10	592
#03-12	431

Restaurant	
Unit	Area (sqft)
#03-05	700
#03-11	753

MacPherson Rd

## 3RD STOREY

- Note: Unit area includes air-con ledge, except:
- Units (#01-10, #01-11, #01-12, #01-13, #01-14 & #01-15) include air-con ledges and loft's voids
  - Units (#03-01, #03-02 & #03-03) include air-con ledges, advertisement panel ledges and advertisement panel voids







www.huttonsgroup.com

Jointly Developed by:



Marketing Agent:



Developer: LVND Investments Pte Ltd, (Registration No. 201224014H) • Tenure of Land: Freehold • Lot No.:3466K MK24 at 401 MacPherson Road • Approved BP No.: A1678-08022-2012-BP01 • Date of Notice of Vacant Possession under the S&P Agreement: No later than 31 Dec 2018 • Expected date of legal completion: No later than 31 Dec 2021 or 3 years after the date of delivery of vacant possession, whichever is earlier.

Disclaimer & Additional Notes

While every reasonable care has been taken in preparation of this brochure, the developer and its agent cannot be held responsible for any inaccuracies or omissions. All statements are believed to be correct but shall not be regarded as statements or representation of fact. All information and specifications, renderings, visual representations, and plans are current at the time of publication and are subject to change as may be required by us and/or the competent authorities.

The brand, colour and model of all materials, fittings, equipment, finishes, installations and appliances supplied shall be provided subject to Architect's selection, market availability and the sole discretion of the Vendor.

All information, specifications and statements herein shall not be treated to form part of an offer or contract. Floor plans are subject to amendments as may be required by the relevant authorities. Visual representations, model, showflat displays and illustrations, photographs, art renderings and other graphic representations and references, not limited to landscape and furniture, are intended to portray only artistic impressions of the development and cannot be regarded as representations of fact. Floor areas are only approximate measurements and subject to final survey.

The Sales & Purchase Agreement shall form the entire agreement between the developer and purchaser and shall supersede all statements, representations or promises made prior to the signing of the Sales & Purchase Agreement and shall not be modified by any statements, representations or promises made by the developer or the Marketing agents.