



www.huttonsgroup.com

www.huttonsgroup.com

EON SHENTON rises at the coveted site of 70 Shenton Way, illuminating the Tanjong Pagar waterfront with its majestic grandeur. Here in the Central Business District, each and every angle gives rise to international recognition and promises impressive city and sea views that extend towards the waterfront bungalows of Sentosa. Interweaving both residential and commercial spaces seamlessly, it is the epitome of work, live and play. The world is truly at EON SHENTON, an address that everyone recognises.

www.huttonsgroup.com

AN ADDRESS THE WORLD RECOGNISES...

www.huttonsgroup.com



www.huttonsgroup.com



EC

SHEN

www.huttonsgroup.com



Don

CITY AT YOUR DOORSTEP

NTON

www.huttonsgroup.com

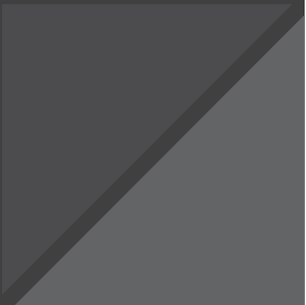
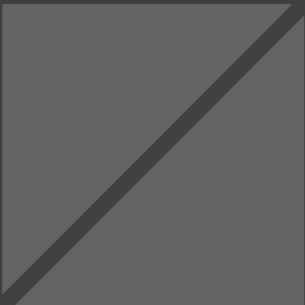
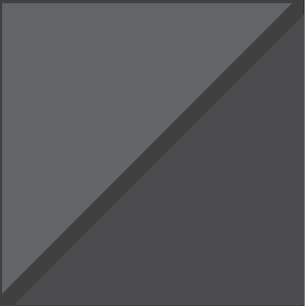
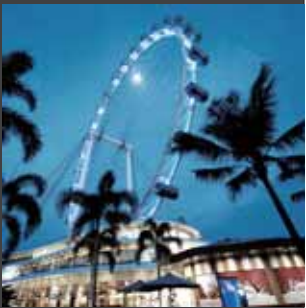




www.livingsgroup.co

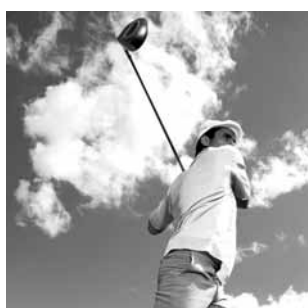
MINUTES TO EVERYWHERE

**MARINA BAY SANDS RAFFLES PLACE
KPE UNIVERSAL STUDIOS BOAT QUAY
SINGAPORE FLYER ECP VIVOCITY
RESORTS WORLD SENTOSA MRTS
MARINA BAY FINANCIAL CENTRE
MARINA BAY GOLF COURSE
MARINA BARRAGE BANKS
ESPLANADE THEATRES
ON THE BAY AYE**



ENJOY THE BEST OF ALL WORLDS

Be amongst the selected few to experience world-class landmarks and venues like Marina Bay Sands, Resorts World, The Esplanade and Singapore Flyer at your doorstep. Be here where Tanjong Pagar transforms into a prime Waterfront City boasting a host of residential spaces, hotels, lifestyle, retail, tourism and commercial facilities. All it takes is a 5-minute walk to access Tanjong Pagar MRT station, leading you to other enchanting sights and anywhere else you would like to be.



www.huttonsgroup.com



ORCHARD RD
ION Orchard
ORCHARD MRT
Tang Plaza
The Paragon
Wisma Atria/
Ngee Ann City/
Takashimaya
Shopping Centre

JLN BUKIT MERAH

AYER RAJAH EXPRESSWAY (AYE)

CENTRAL EXPRESSWAY (CTE)

Telok Blangah Hill Park

CHIJ St. Theresa's Convent

Shelton College Int'l

Radin Mas Pri Sch

CHIJ Kellock

www.huttonsgroup.com

LABRADOR PARK MRT

WEST COAST HIGHWAY

TELOK BLANGAH MRT

Keppel Golf Links/Club

Mount Faber Cable Car Station

Mount Faber Park

TELOK BLANGAH RD

HARBOURFRONT

HarbourFront Centre

VivoCity

St. James Power Station

SENTOSA GATEWAY

Resorts World Sentosa

Siloso Beach

WATERFRONT IMBIAH LRT

BEACH LRT

Universal Studios

SENTOSA

Palawan Beach

Serapong Golf Course

Tanjong Golf Course Sentosa Golf Club

Tanjong Beach





www.huttonsgroup.com

STANDING TALL IN THE CENTRAL BUSINESS DISTRICT

With a mix of double-volume and high-ceiling levels, EON SHENTON towers over other conventional skyscrapers in the Central Business District that comprises more levels for a better view.

AMSL=153.00M			
148700	5200	32nd Level	Residential
	3700	31st Level	Residential
	3325	30th Level	Residential
	3325	29th Level	Residential
	3325	28th Level	Residential
	3325	27th Level	Residential
	3325	26th Level	Residential
	3325	25th Level	Residential
	3325	24th Level	Residential
	3325	23rd Level	Residential
	6750	22nd Level	Sky Deck
	5550	21st Level	Offices
	5000	20th Level	Offices
	5000	19th Level	Offices
	5000	18th Level	Offices
	5000	17th Level	Offices
	5000	16th Level	Offices
	5000	15th Level	Offices
	6750	14th Level	Fitness Deck
	6000	13th Level	Offices
	5000	12th Level	Offices
21350	5000	11th Level	Offices
	5000	10th Level	Offices
	5000	9th Level	Offices
	5000	8th Level	Offices
	5000	7th Level	Offices
	6800	6th Level	Pool & Garden Deck
	6950	5th Level	Car Park
	2800	4th Level	Car Park
	2800	3rd Level	Car Park
	2800	2nd Level	Car Park
8250	6000	1st Level	Shops
	5250	1st Basement Level	Basement Car Park
	3000	2nd Basement Level	Basement Car Park

Schematic Diagram of EON SHENTON Tower

3300	45th Level	Residential
3300	44th Level	Residential
3300	43rd Level	Residential
3300	42nd Level	Residential
3300	41st Level	Residential
3300	40th Level	Residential
3300	39th Level	Residential
3300	38th Level	Residential
3300	37th Level	Residential
3300	36th Level	Residential
3300	35th Level	Residential
3300	34th Level	Residential
3300	33rd Level	Offices
3300	32nd Level	Offices
3300	31st Level	Offices
3300	30th Level	Offices
3300	29th Level	Offices
3300	28th Level	Offices
3300	27th Level	Offices
3300	26th Level	Offices
3300	25th Level	Offices
3300	24th Level	Offices
3300	23rd Level	Offices
3300	22nd Level	Offices
3300	21st Level	Offices
3300	20th Level	Offices
3300	19th Level	Offices
3300	18th Level	Offices
3300	17th Level	Offices
3300	16th Level	Offices
3300	15th Level	Offices
3300	14th Level	Offices
3300	13th Level	Offices
3300	12th Level	Offices
3300	11th Level	Offices
3300	10th Level	Offices
3300	9th Level	Offices
3300	8th Level	Offices
3300	7th Level	Offices
3300	6th Level	Offices
2800	5th Level	Car Park
2800	4th Level	Car Park
2800	3rd Level	Car Park
2800	2nd Level	Car Park
5000	1st Level	Shops

Schematic Diagram of Conventional Tower

EON SHENTON's elegant landscaping recreates a resort-living ambience amidst an urban neighbourhood. A generous array of lush foliages and tree canopies envelop the building inside-out. Nature lovers will be enthralled by the pristine greenery that greets you upon entry. Exotic flora and fauna line the 6th, 14th and 22nd-storey sky decks, creating a dazzling exhibit of colours and scents.

SEA-ING IS BELIEVING
HOTEL STYLE FACILITIES ON THE HOUSE



Artist's Impression



COMMUNAL SKY TERRACES

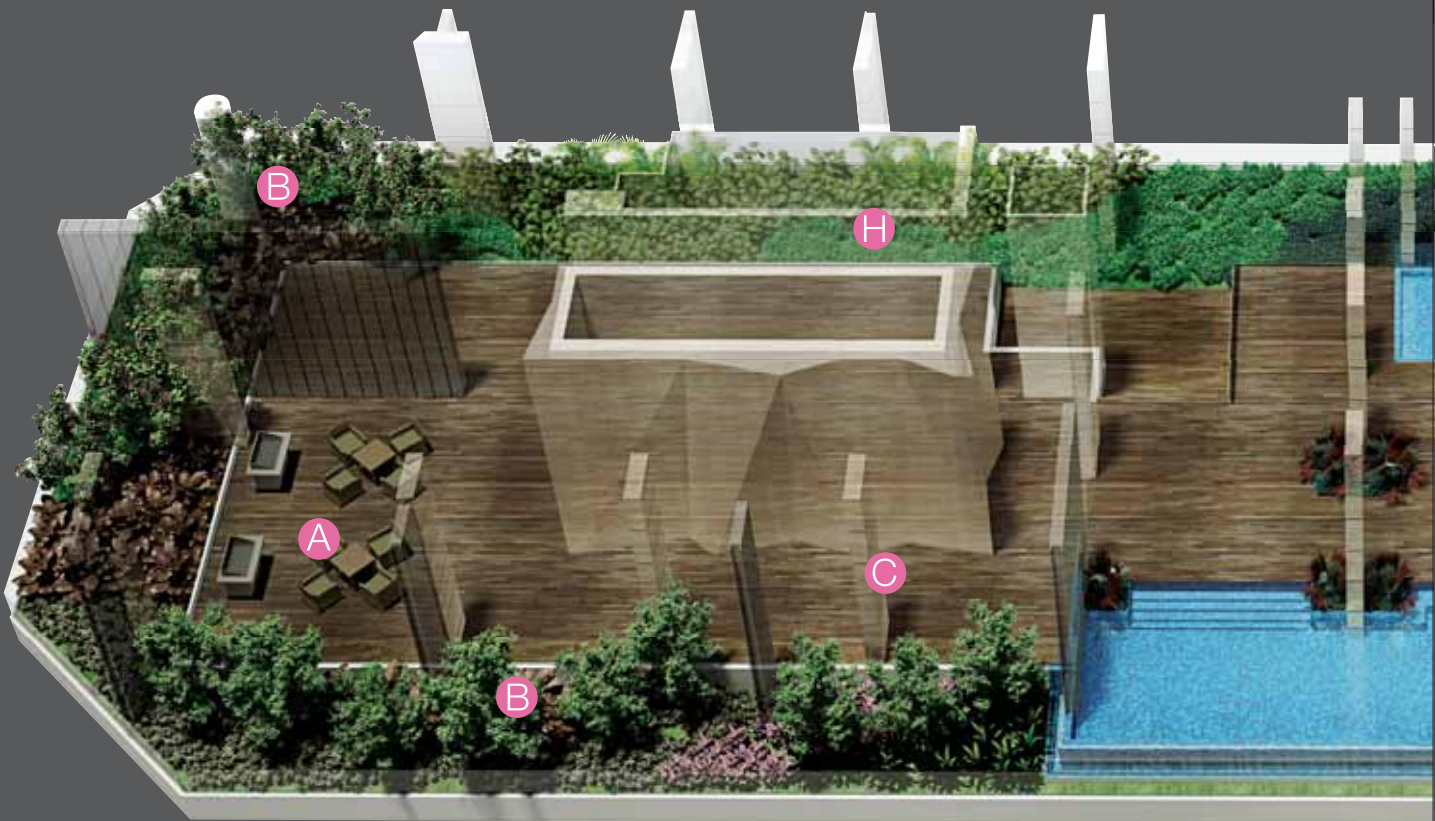
Enjoy spectacular views within the inviting greenery of the Communal Sky Terraces on the 8th, 11th, 16th and 19th-storey exclusively for offices and 25th storey for residential units. Perfectly angled for unblocked enjoyment of glorious sunrise and sunset over the horizon, the Communal Sky Terraces maximise the pleasure of life at EON SHENTON.

POOL & GARDEN DECK @ 6

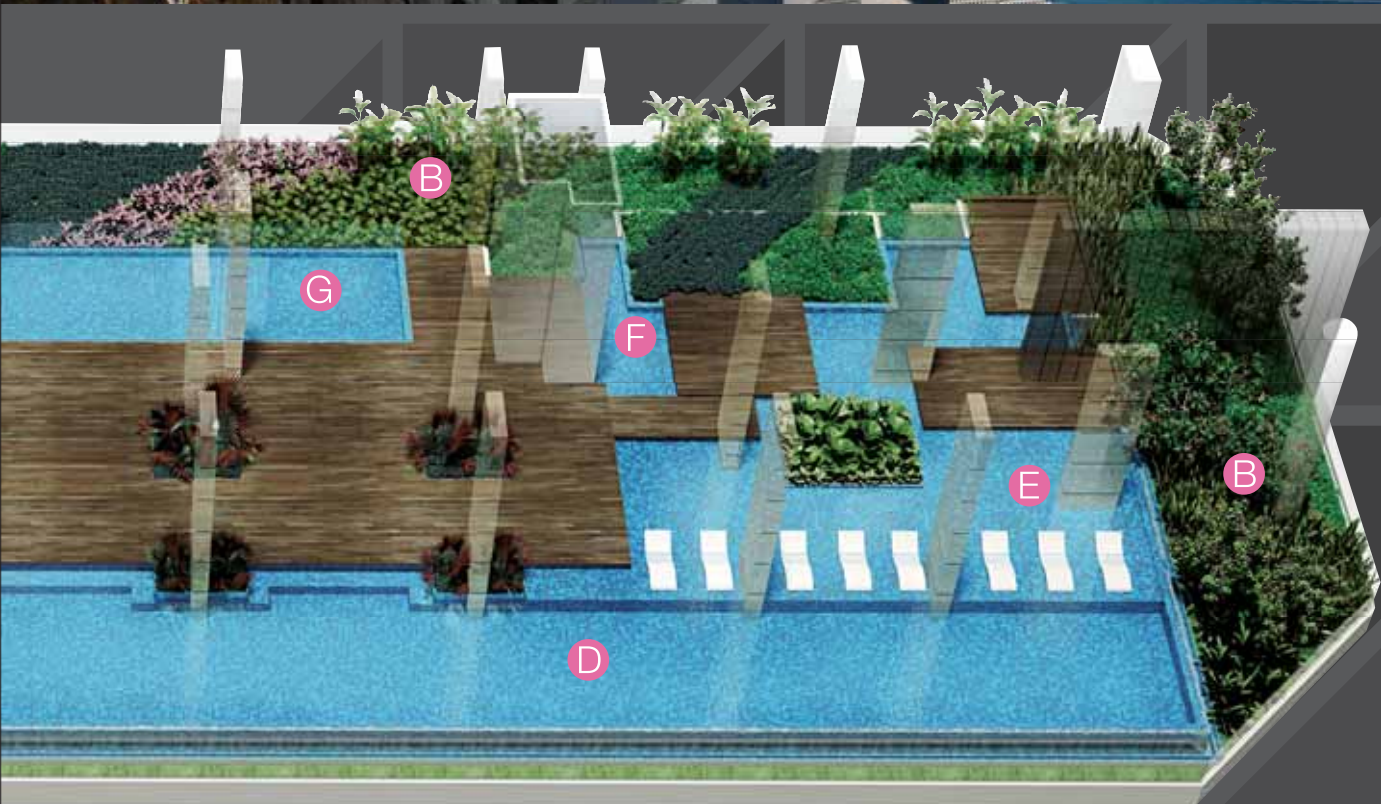


Welcome a new lease of life in the prime precinct. Look forward to poolside partying and sun-bathing at the Lap Pool on the 6th floor while mesmerizing views of the skyline and sea surround you and your loved ones. Hold delirious social gatherings at the Garden with soothing sounds of trickling water features keeping you refreshed all day long.

www.huttonsgroup.com



Artist's Impression



LEGEND

A) BBQ Area
E) Wet Deck

B) Garden
F) Waterscape

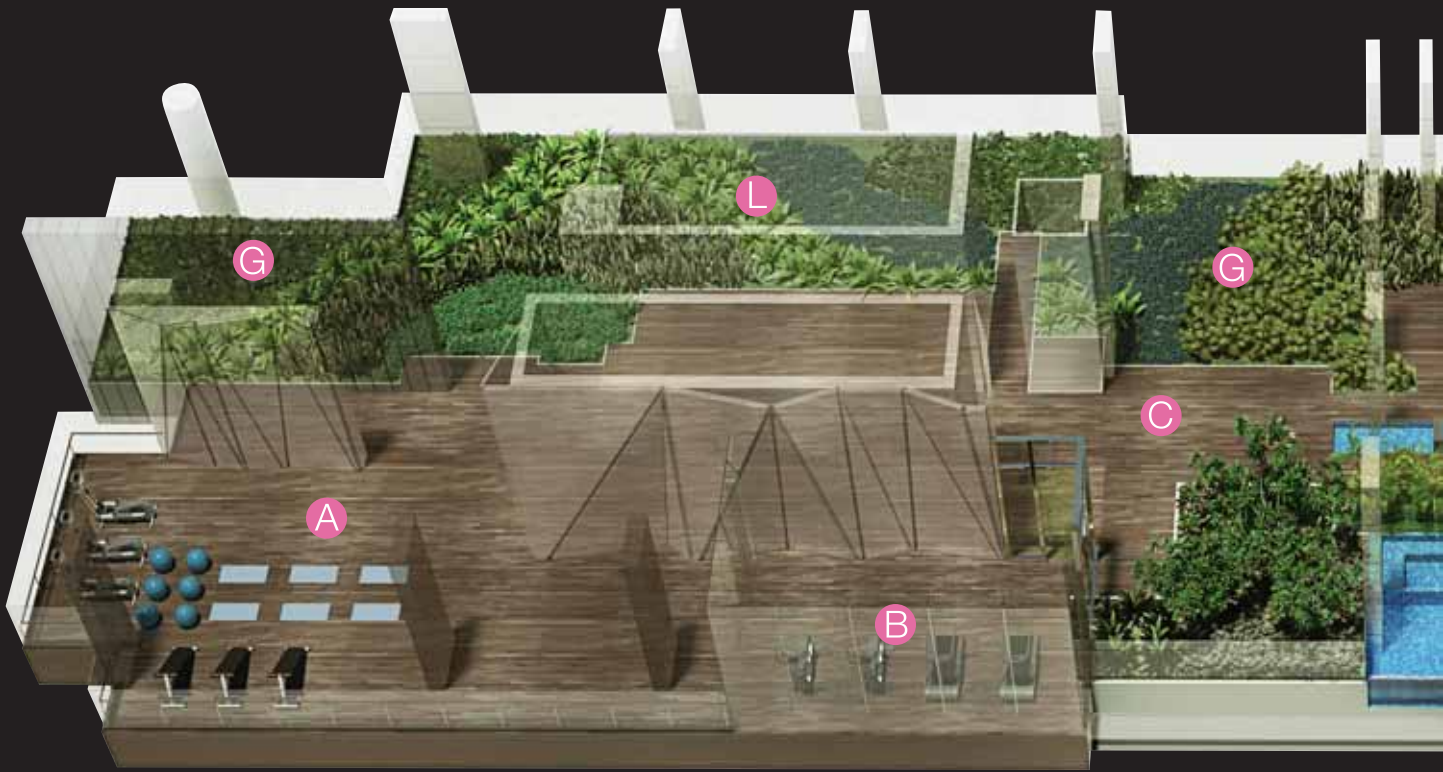
C) Sun Deck
G) Wading Pool

D) Lap Pool
H) Washroom

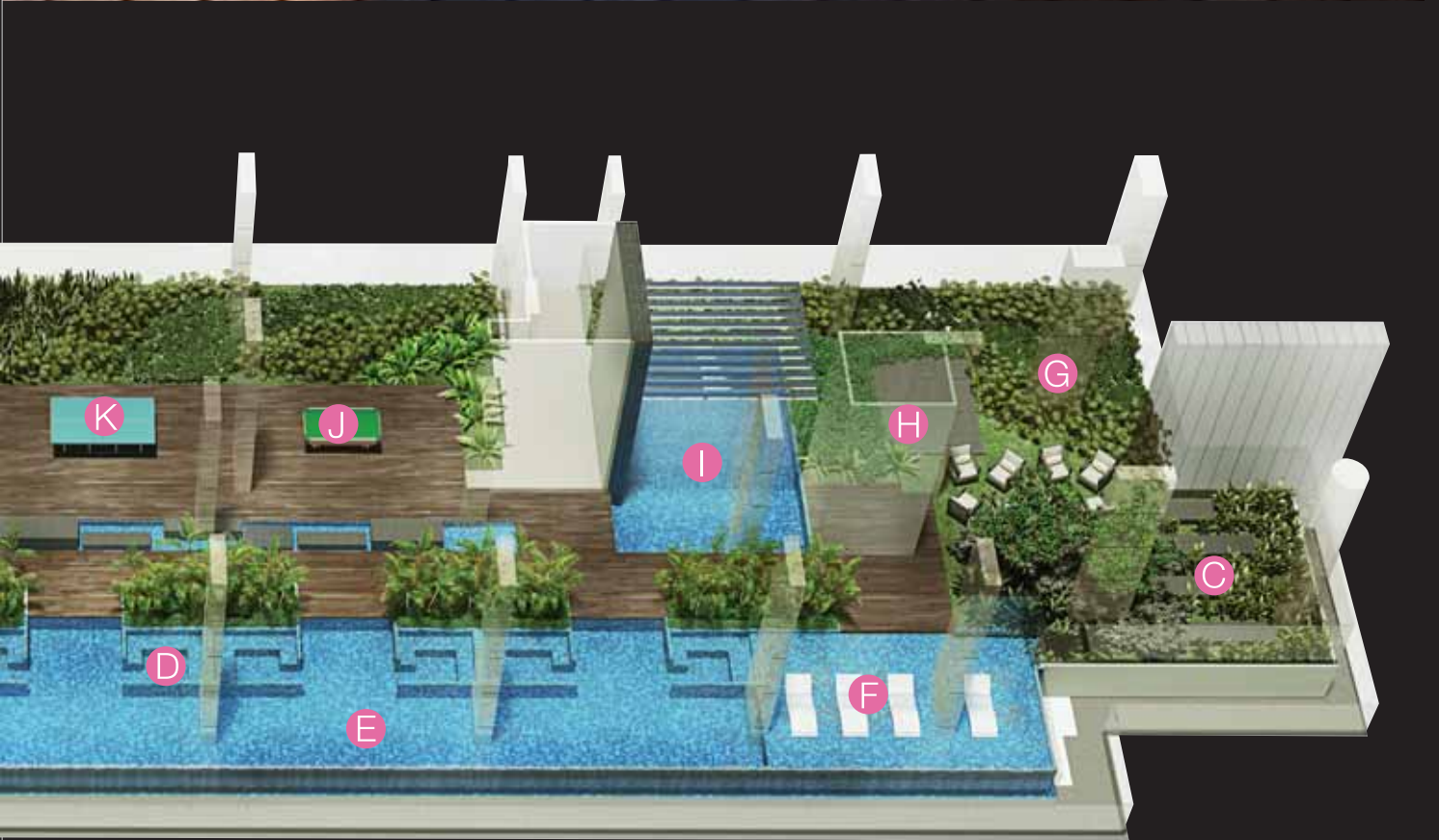


FITNESS DECK @ 14

Immerse in the finer moments of life when you own a comprehensive range of private facilities. On the 14th floor Fitness Deck, you can work out to beat a day's stress in the state-of-the-art Gymnasium or take time to relish solitude in the Spa Pool. EON SHENTON is where exclusivity takes place.



Artist's Impression



LEGEND

- | | | | | |
|--------------------------|--------------|---------------|-------------------|---------------|
| A) Outdoor Fitness Space | B) Gymnasium | C) Veranda | D) Jacuzzi | E) Spa Pool |
| F) Sun Lounges | G) Garden | H) Steam Room | I) Waterfall Pool | J) Pool Table |
| K) Table Tennis | L) Washroom | | | |

SKY DECK @ 22



www.huttonsgroup.com



Artist's Impression



Artist's Impression

www.huttonsgroup.com

Showcasing a remarkable Water Garden and Sky Viewing Decks, this modern development provides you with precious opportunities to lead a blissful lifestyle in good company. A stylish Meeting Room provides the ideal venue for organising conferences with business partners, conducting company functions and entertaining clients.



LEGEND

- | | | | |
|---------------------|-----------|-----------------|-------------------|
| A) Meeting Room | B) Lounge | C) Bar Counter | D) Reading Corner |
| E) Sky Viewing Deck | F) Garden | G) Water Garden | H) Washroom |



Homeowners will love the plush, stylish apartments designed for heart-warming comfort and effortless elegance. Clean, functional layouts let you maximise your living space for unbounded pleasure. Live it up in a home that embraces sophistication inside-out.





www.huttonsgroup.com



Artist's Impression

EXPERIENCE A WORLD OF DIFFERENCE

At EON SHENTON, your ownership is not just an office. It's your life. You will see a huge difference starting from your very day here. Be pampered by the convenience of being close to everywhere. Own the beautiful views of the city everyday and night from your exclusive unit that boasts a 4.8m high ceiling. And indulge in the luxury of high-end finishes and fittings within your working space. Let your world begin here at EON SHENTON.



PREMIUM FITTINGS FOR
RESIDENTIAL APARTMENTS,
PENTHOUSES AND OFFICES



LAUFEN
bathrooms

www.huttonsgroup.com



GAGGENAU



hansgrohe

www.huttonsgroup.com

Luxuriate in the most revered brands in interior fittings and finishes. Famed for fashioning products of world-class design and the finest craftsmanship, HANSGROHE, BOSCH, LAUFEN and GAGGENAU ensure excellence in durability, functionality and style.



 **BOSCH**

Note: Washing machine, cooker hob and hood will not be provided for office units.
All photographs featured are impressions only.

PAST PROJECTS BY THE DEVELOPERS OF 70 SHENTON PTE LTD:



SPOTTISWOODE 18



NEWTON EDGE



ROBINSON SUITES

www.huttonsgroup.com

DEVELOPED BY



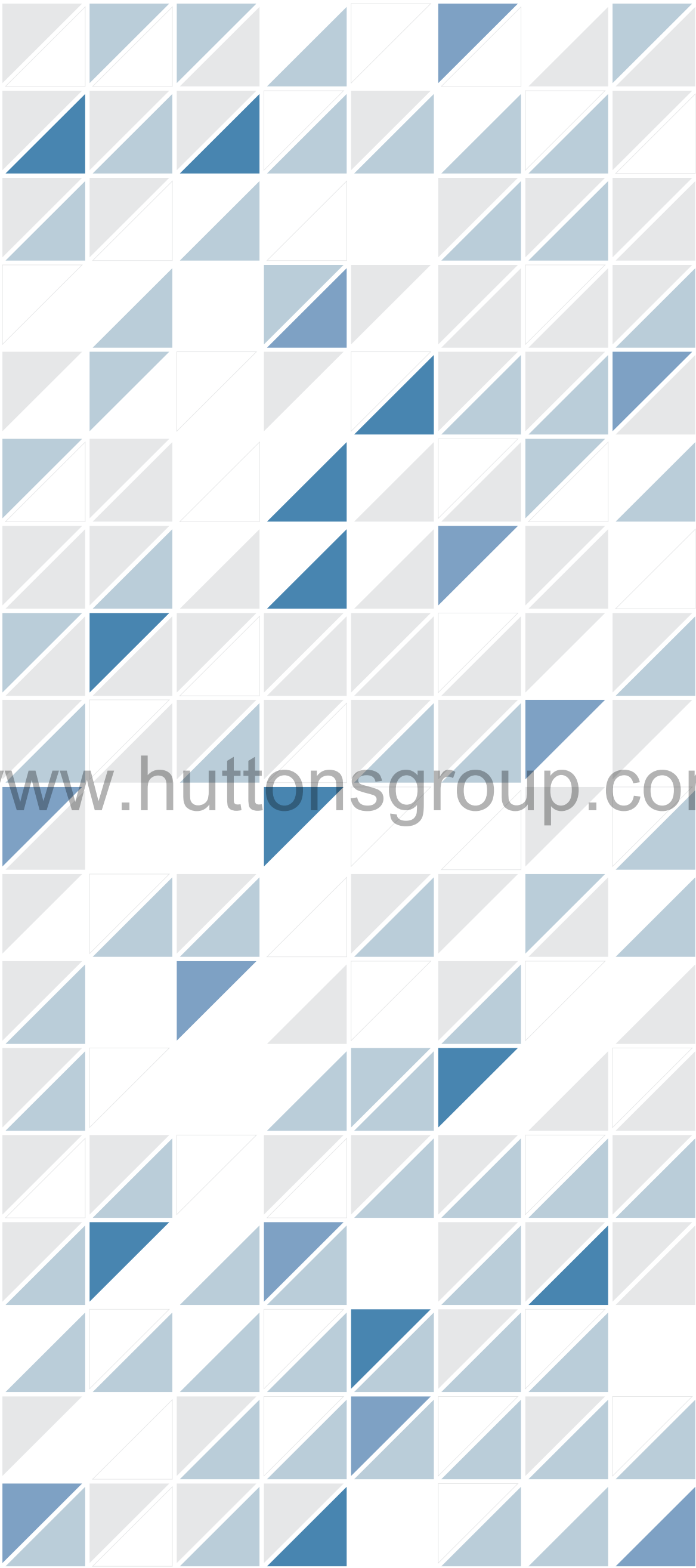
**70
Shenton
Pte Ltd**

Name of Project: **Eon Shenton** Developer: **70 Shenton Pte Ltd (RCB No: 201006166W)**
Developer's Licence No.: **C0835** Tenure of Land: **99 years commencing from 6 October 2011** Lot No.: **Lot 415P and 1261A PT TS23 at 70 Shenton Way** Expected Date of TOP: **31 December 2019** Expected Date of Legal Completion: **31 December 2022**
Building Plan No.: **A1276-00507-2010-BP01 dated 13 March 2012**

While every reasonable care has been taken in preparing this brochure and in constructing the models and showflats, the Developer and the Marketing Agents cannot be held responsible for any inaccuracies or omissions. Visual representations, models, showflats displays and illustrations, photographs, art renderings and other graphic representations and references are intended to portray only artist's impressions of the development and cannot be regarded as representations of fact. The property is subject to final inspection by relevant authorities to comply with the current code of practice.

All information, specifications, renderings, visual representations and plans are correct at the time of publication and are subject to change as may be required by us and/or the competent authorities and shall not form part of any offer and contract nor constitute any warranty by us and shall not be regarded as statements or representations of fact. All plans are subject to amendments as directed and/or approved by the building authorities. All areas are approximate measurements only and subject to final survey. The Sale & Purchase Agreement shall form the entire agreement between us as the Developer and the Purchaser and shall supercede all statements, representations or promises made prior to the signing of the Sale & Purchase Agreement and shall in no way be modified by any statements, representations or promises made by us or the Marketing Agents.

www.huttonsgroup.com



www.huttonsgroup.com



www.huttonsgroup.com

COMMERCIAL
FLOOR PLANS



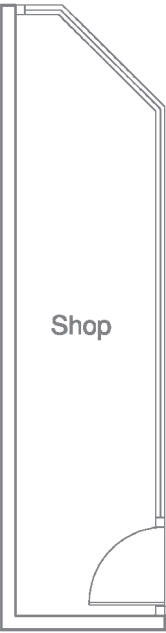


Living in the city brightens every heart. Imagine living in a development that brightens the city. Designed with fascinating lights that attract every attention, EON SHENTON stands tall as the beacon of light in the area especially when night falls. Towering at a height of 32-storey, it is made up of shops, offices and residential units as well as 4 levels of multi-storey car parks and 2 levels of basement car parks for everyone's convenience. The facade is carefully designed with 3 outstanding sky decks offering hotel-style facilities and breathtaking unblocked views of the city skyline. It is truly a unique development that will shape the future of commerce and recreation.

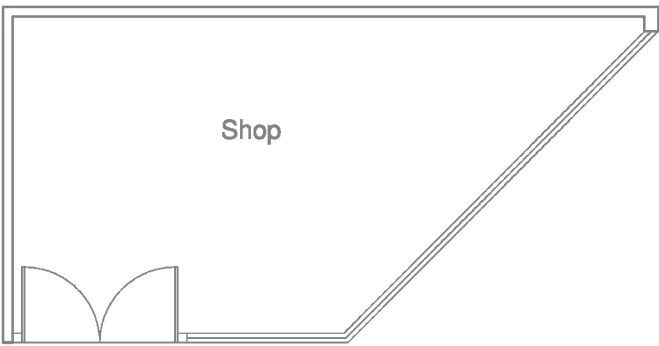
www.huttonsgroup.com

SHOP

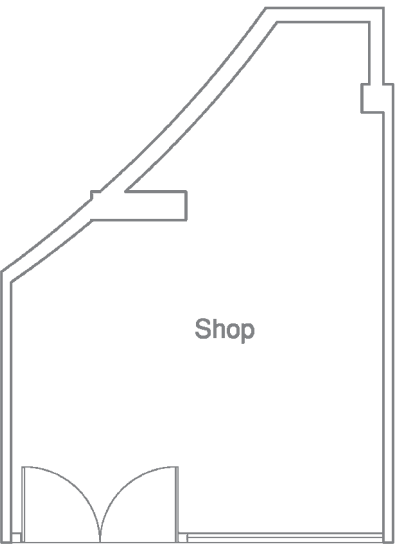
TYPE S01
Unit #01-01
Area 13 Sqm / 140 Sqft



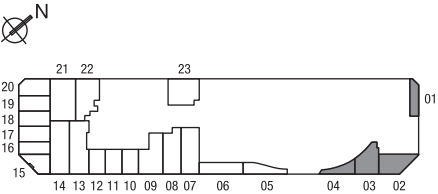
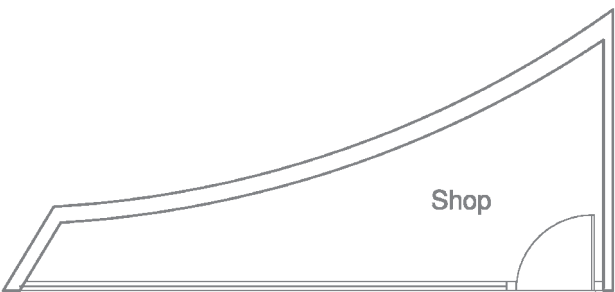
TYPE S02
Unit #01-02
Area 22 Sqm / 237 Sqft



TYPE S03
Unit #01-03
Area 21 Sqm / 226 Sqft

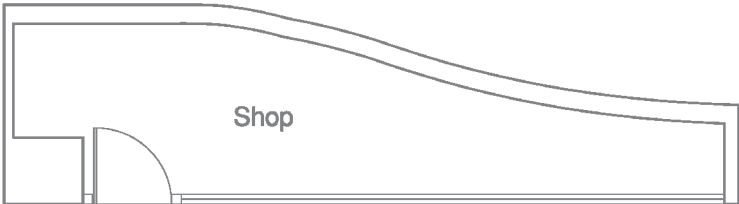


TYPE S04
Unit #01-04
Area 12 Sqm / 129 Sqft



All areas are inclusive of a/c ledge, if any. All plans are subject to amendments as approved by the relevant authorities. Floor areas are approximate measurements and subject to final survey.

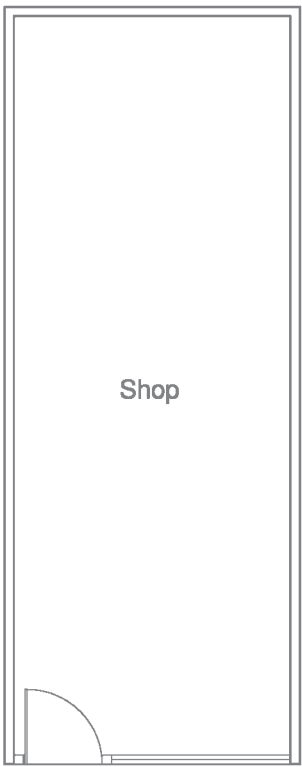
TYPE S05
Unit #01-05
Area 16 Sqm / 172 Sqft



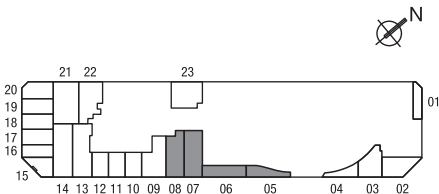
TYPE S06
Unit #01-06
Area 19 Sqm / 205 Sqft



TYPE S07
Unit #01-07
Area 28 Sqm / 301 Sqft



TYPE S08
Unit #01-08
Area 27 Sqm / 291 Sqft



SHOP

TYPE S09

Unit #01-09
Area 29 Sqm / 312 Sqft



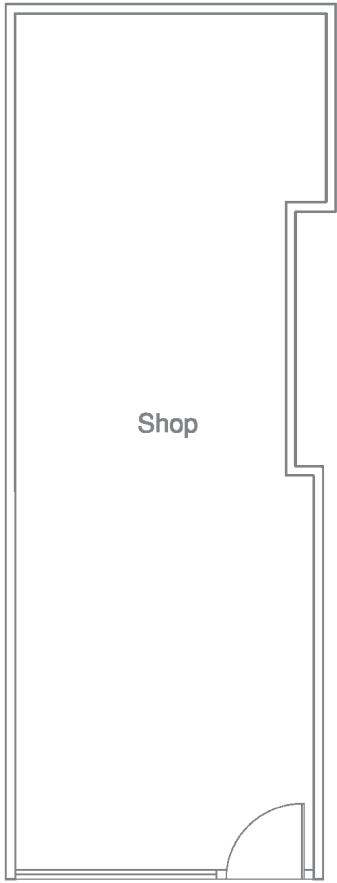
TYPE S10, S11, S12

Unit #01-10 to #01-12
Area 16 Sqm / 172 Sqft



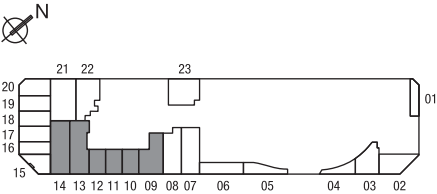
TYPE S13

Unit #01-13
Area 33 Sqm / 355 Sqft



TYPE S14

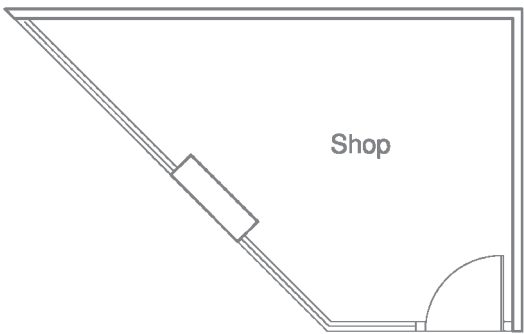
Unit #01-14
Area 34 Sqm / 366 Sqft



All areas are inclusive of a/c ledge, if any. All plans are subject to amendments as approved by the relevant authorities. Floor areas are approximate measurements and subject to final survey.

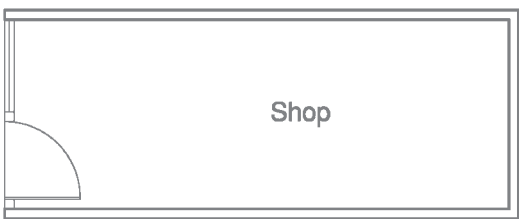
TYPE S15

Unit #01-15
Area 18 Sqm / 194 Sqft



TYPE S16

Unit #01-16
Area 15 Sqm / 162 Sqft



TYPE S17

Unit #01-17
Area 17 Sqm / 183 Sqft



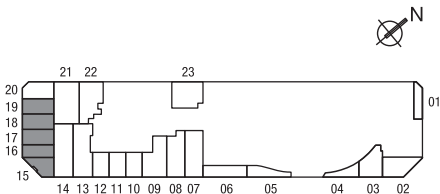
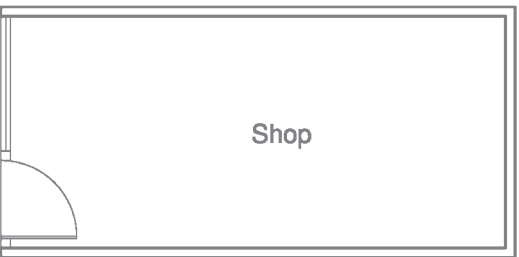
TYPE S18

Unit #01-18
Area 17 Sqm / 183 Sqft



TYPE S19

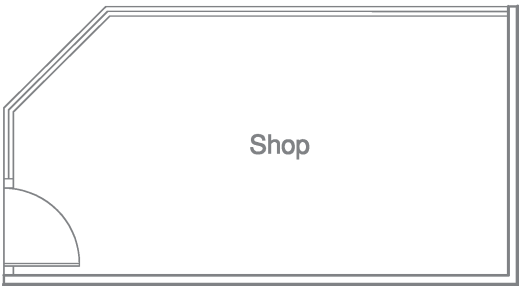
Unit #01-19
Area 17 Sqm / 183 Sqft



SHOP

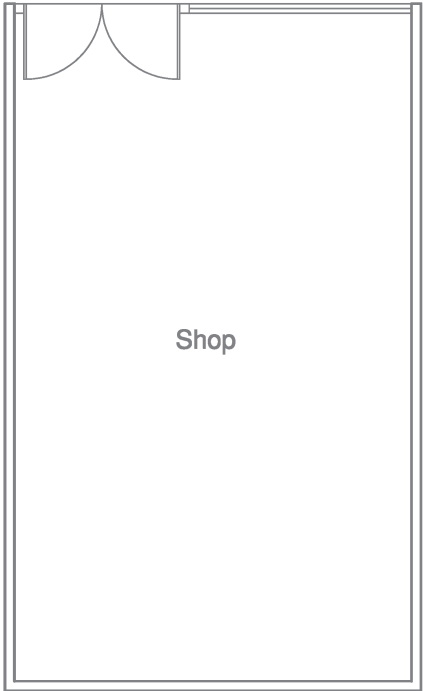
TYPE S20

Unit #01-20
Area 18 Sqm / 194 Sqft



TYPE S21

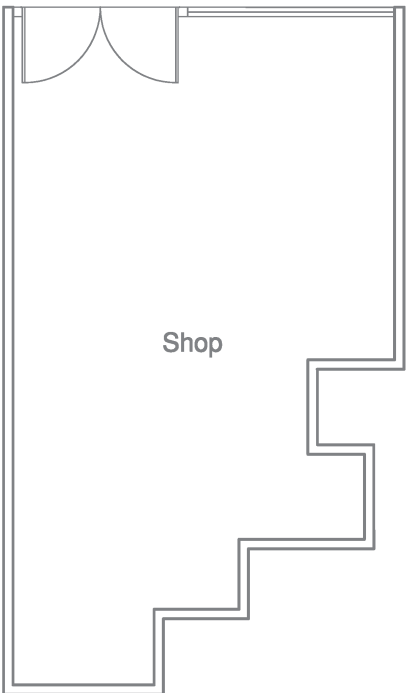
Unit #01-21
Area 35 Sqm / 377 Sqft



www.huttonsgroup.com

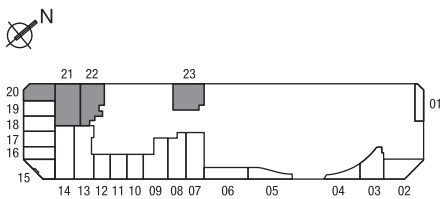
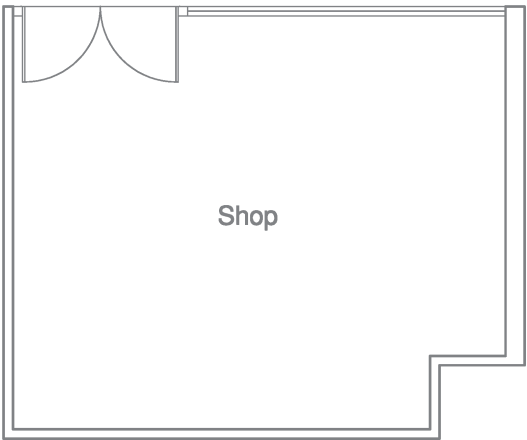
TYPE S22

Unit #01-22
Area 29 Sqm / 312 Sqft



TYPE S23

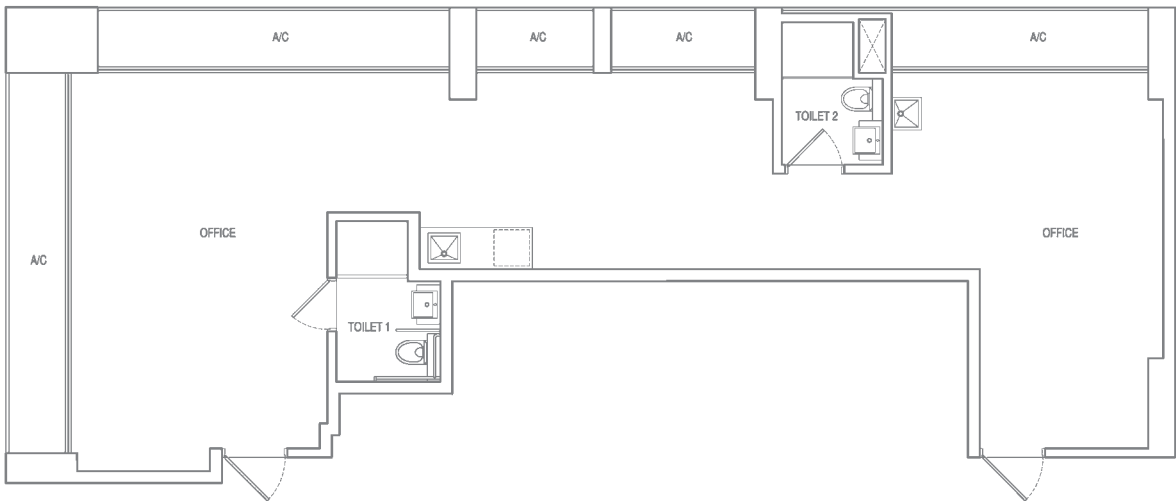
Unit #01-23
Area 27 Sqm / 291 Sqft



All areas are inclusive of a/c ledge, if any. All plans are subject to amendments as approved by the relevant authorities. Floor areas are approximate measurements and subject to final survey.

TYPE A

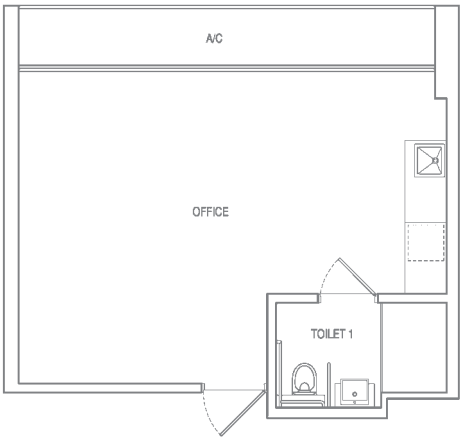
Unit #07-01/02 to #13-01/02
#15-01/02 to #21-01/02
Area 117 Sqm / 1259 Sqft



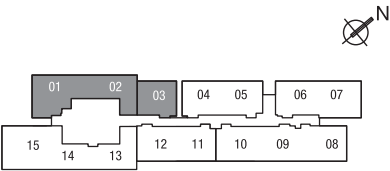
www.huttonsgroup.com

TYPE B

Unit #07-03 to #13-03
#15-03 to #21-03
Area 47 Sqm / 506 Sqft



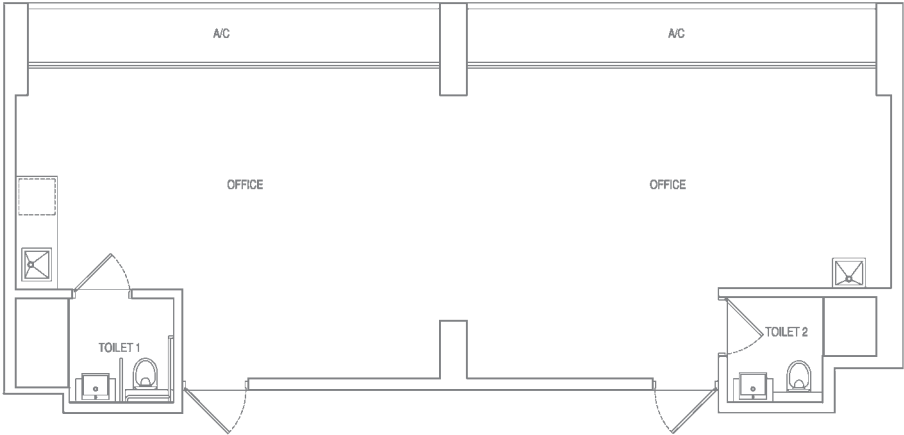
All areas are inclusive of a/c ledge, if any. All plans are subject to amendments as approved by the relevant authorities.
Floor areas are approximate measurements and subject to final survey.



OFFICE

TYPE C

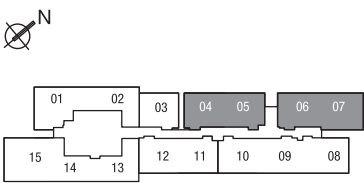
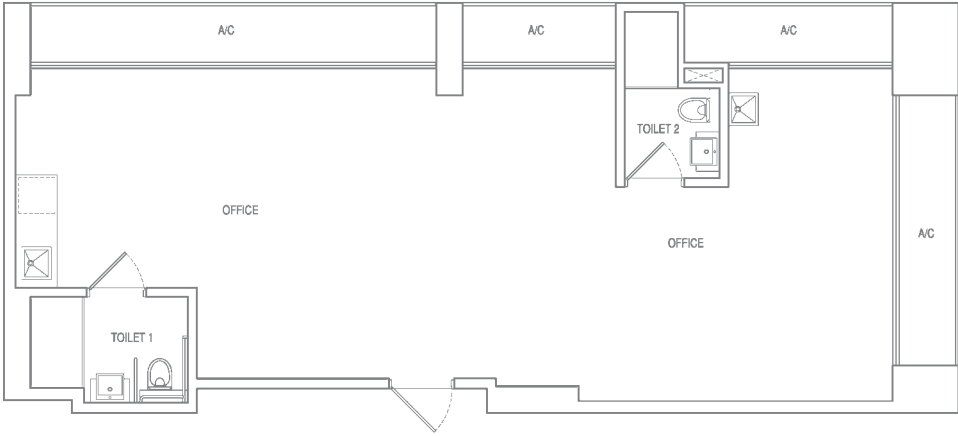
Unit #07-04/05 to #13-04/05
#15-04/05 to #21-04/05
Area 96 Sqm / 1033 Sqft



www.huttonsgroup.com

TYPE D

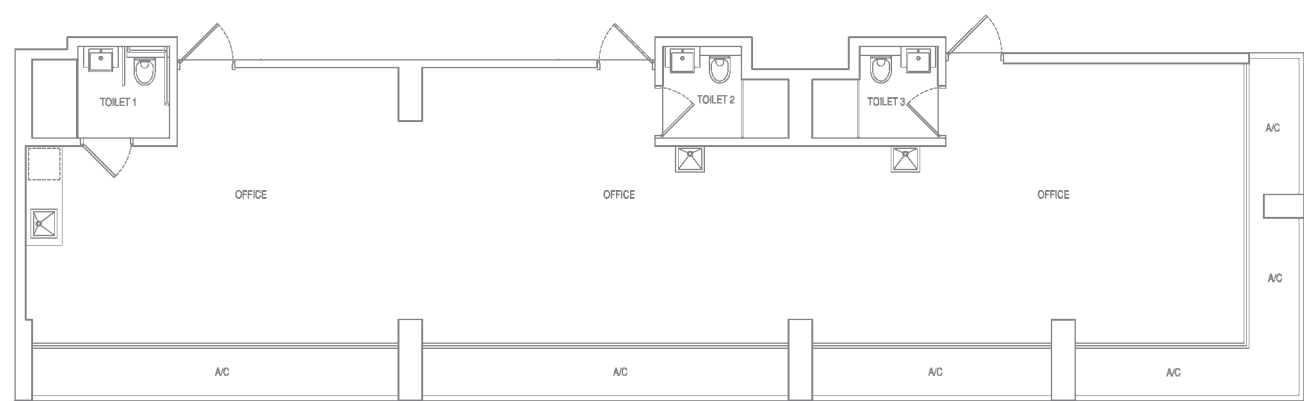
Unit #07-06/07 to #13-06/07
#15-06/07 to #21-06/07
Area 103 Sqm / 1109 Sqft



All areas are inclusive of a/c ledge, if any. All plans are subject to amendments as approved by the relevant authorities. Floor areas are approximate measurements and subject to final survey.

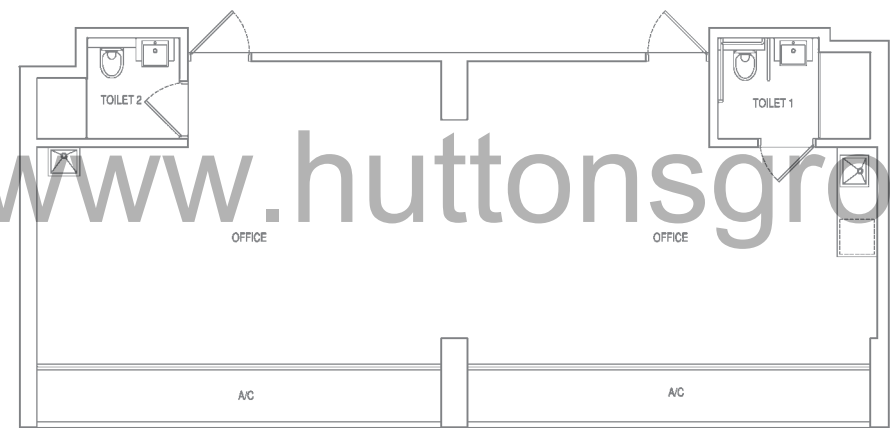
TYPE E

Unit #07-08/09/10 to #13-08/09/10
#15-08/09/10 to #21-08/09/10
Area 158 Sqm / 1701 Sqft



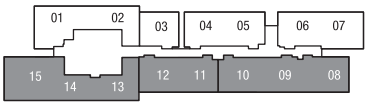
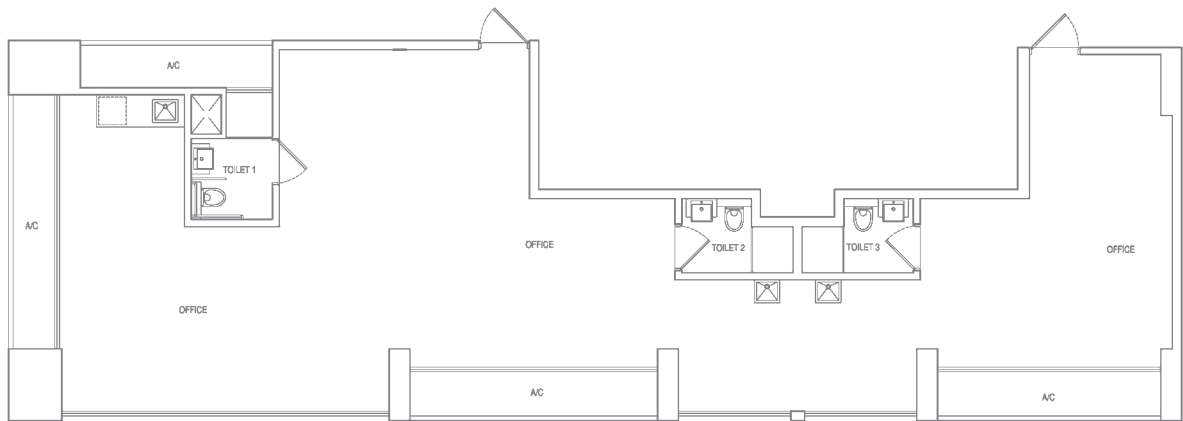
TYPE F

Unit #07-11/12 to #13-11/12
#15-11/12 to #21-11/12
Area 96 Sqm / 1033 Sqft



TYPE G

Unit #07-13/14/15 to #13-13/14/15
#15-13/14/15 to #21-13/14/15
Area 164 Sqm / 1765 Sqft



All areas are inclusive of a/c ledge, if any. All plans are subject to amendments as approved by the relevant authorities.
Floor areas are approximate measurements and subject to final survey.

SPECIFICATIONS – OFFICE

1. FOUNDATION
Bored piles and/or concrete piles and/or steel H piles and/or raft foundation.

2. SUBSTRUCTURE & SUPERSTRUCTURE
Reinforced concrete and/or steel frame.

3. WALL

- External	: Common clay bricks and/or precast panel and/or reinforced concrete generally.
- Internal	: Common clay bricks and/or cement blocks and/or light weight blocks and/or precast panels and/or reinforced concrete and/or dry wall generally.

4. ROOF
Flat Roof : Reinforced concrete roof with waterproofing and insulation and/or metal roofing with insulation.

5. CEILING
Off form concrete surface and/or plaster board ceiling and/or skim coat where applicable.

6. FINISHES

- Internal Wall Finishes:
Cement and sand plaster and/or skim coat with emulsion paint finish where applicable.
- i. Toilet 1:
Compressed marble and/or homogenous tiles and/or marble feature wall finish (up to 2.5m height only).
- ii. Toilet 2 & 3 (where applicable):
Compressed marble and/or homogenous tiles finish (up to 2.5m height only).

Note:
a) The internal brickwall/precast panels/partitions of the toilets will be built to a height of up to 2.5m only.

- Internal Floor Finishes:
 - a) For Office:
Compressed marble with skirting.
 - b) Toilet:
Compressed marble and/or homogenous tiles finish.
 - c) A/C Ledges:
Cement and sand screed finish.

7. WINDOWS
Aluminium framed glass windows where applicable.

- Note:
- a) All aluminium frames shall be powder coated/natural anodized finish.
 - b) All windows are either side hung, or top hung or bottom hung or sliding or any combination of the above mentioned.
 - c) All glazing below 1m from floor level shall be tempered or laminated glass.
 - d) All glazing to be plain float and/or tinted glass.

8. DOORS
Approved fire-rated door c/w ironmongery.

9. SANITARY FITTINGS

- a) Toilet 1
 - 1 shower screen with shower mixer, overhead shower & shower handset
 - 1 basin c/w tap mixer & cabinet below
 - 1 water closet c/w sensor flush
 - 1 mirror
 - 1 toilet roll holder
- b) Toilet 2 & 3 (where applicable)
 - 1 shower screen with shower mixer & shower handset
 - 1 basin c/w tap mixer & cabinet below
 - 1 water closet c/w sensor flush
 - 1 mirror
 - 1 toilet roll holder

10. ELECTRICAL INSTALLATION
230V single phase power supply for office units.

- Note:
- Electrical wiring will be in concealed conduits where possible. Where there is a false ceiling, the electrical wiring will be in surface mounted conduit in the ceiling space. Exposed trunking at a/c ledge.
 - The routing of services within the office units shall be at the sole discretion of the Architect and Engineer.
 - Cable-Readiness to comply with authorities’ requirements.

11. NETWORK

- Cable network provided.
- Telephone point provided within units.

12. LIGHTNING PROTECTION
Lightning Protection System shall be provided in accordance with the current edition of Singapore Code of Practice.

13. WATERPROOFING
Waterproofing to floors of kitchen, master bathroom, bathroom, roof terrace, balcony, swimming pool, pool deck, toilets and reinforced concrete flat roof where applicable.

14. PAINTING

a) Internal Walls	: Emulsion paint.
b) External Walls	: Weather shield paint and/or spray textured coating at selected areas only.

15. DRIVEWAY AND CAR PARK
Concrete finished with floor hardener and/or perforated concrete slab and/or interlocking pavers and/or aeration slab (where applicable).

16. RECREATIONAL FACILITIES
Pool & Garden Deck @ 6

- BBQ Area
- Garden
- Sun Deck
- Lap Pool
- Wet Deck
- Waterscape
- Wading Pool

Fitness Deck @ 14

- Outdoor Fitness Space
- Gymnasium
- Veranda
- Jacuzzi
- Spa Pool
- Sun Lounges
- Garden
- Steam Room
- Waterfall Pool
- Pool Table
- Table Tennis

Sky Deck @ 22

- Meeting Room
- Lounge
- Bar Counter
- Reading Corner
- Sky Viewing Deck
- Garden
- Water Garden

17. ADDITIONAL ITEMS

a) Floor Trap	: For all office units.
b) Air-Conditioning	: For Office - Split air-conditioning system provided.
c) Water Supply	: Incoming water supply provided with individual metering.
d) Pantry Cabinets (outside wall of Toilet 1 only)	i) Built-in pantry cabinets c/w solid surface counter top. ii) One stainless steel sink c/w sink mixer. iii) Built-in microwave oven. iv) Built-in integrated refrigerator.
e) One wall-hung stainless steel sink c/w tap (outside wall of Toilet 2 & 3 where applicable).	
f) Mechanical Ventilation	Toilets may be mechanically-ventilated, whenever applicable to M&E Engineer’s requirements.

SPECIFICATIONS – SHOP

1. FOUNDATION

Bored piles and/or concrete piles and/or steel H piles and/or raft foundation.

2. SUBSTRUCTURE & SUPERSTRUCTURE

Reinforced concrete and/or steel frame.

3. WALL

- External : Common clay bricks and/or precast panel and/or reinforced concrete generally.
- Internal : Common clay bricks and/or cement blocks and/or light weight blocks and/or precast panels and/or reinforced concrete and/or dry wall generally.

4. ROOF

Flat Roof : Reinforced concrete roof with waterproofing and insulation and/or metal roofing with insulation.

5. CEILING

Off form concrete surface and/or plaster board ceiling and/or skim coat where applicable.

6. FINISHES

- Internal Wall Finishes : Cement and sand plaster and/or skim coat with emulsion paint finish where applicable.
- Internal Floor Finishes:
 - a) For Shop : Concrete surface in trowel finish.
 - b) A/C Ledges : Cement and sand screed finish.

7. SHOP FRONT

Fixed glass panel c/w door and lockset.

8. SANITARY FITTINGS

1 wall hung wash basin c/w tap.

9. ELECTRICAL INSTALLATION

230V single phase power supply for shop units.

Note:

- Electrical wiring will be in concealed conduits where possible. Where there is a false ceiling, the electrical wiring will be in surface mounted conduit in the ceiling space.
- The routing of services within the shop units shall be at the sole discretion of the Architect and Engineer.
- Cable-Readiness to comply with authorities' requirements.

10. NETWORK

- Cable network provided.
- Telephone point provided within units.

11. LIGHTNING PROTECTION

Lightning Protection System shall be provided in accordance with the current edition of Singapore Code of Practice.

12. WATERPROOFING

Waterproofing to floors of kitchen, master bathroom, bathroom, roof terrace, balcony, swimming pool, pool deck, toilets and reinforced concrete flat roof where applicable.

13. PAINTING

- a) Internal Walls : Emulsion Paint.
- b) External Walls : Weather shield paint and/or spray textured coating at selected areas only.

14. DRIVEWAY AND CAR PARK

Concrete finished with floor hardener and/or perforated concrete slab and/or interlocking pavers and/or aeration slab (where applicable).

15. RECREATIONAL FACILITIES

Pool & Garden Deck @ 6

- BBQ Area
- Garden
- Sun Deck
- Lap Pool
- Wet Deck
- Waterscape
- Wading Pool

Fitness Deck @ 14

- Outdoor Fitness Space
- Gymnasium
- Veranda
- Jacuzzi
- Spa Pool
- Sun Lounges
- Garden
- Steam Room
- Waterfall Pool
- Pool Table
- Table Tennis

Sky Deck @ 22

- Meeting Room
- Lounge
- Bar Counter
- Reading Corner
- Sky Viewing Deck
- Garden
- Water Garden

16. ADDITIONAL ITEMS

- a) Floor Trap : For all shop units.
- b) Air-Conditioning : For Shop - Split air-conditioning system provided.
- c) Water Supply : Incoming water supply provided with individual metering.

FOR OFFICE AND SHOP

Note:

- 1) The brand and model of all equipment supplied shall be provided subject to market availability and the sole discretion of the Vendor.
- 2) Layout/location of fan coil units, electrical points, telephone points and door swing positions are subject to Architect's sole discretion and final design.
- 3) The Purchaser is liable to pay annual fee, subscription fee and such other fees to the Starhub Cable Vision Ltd (SCV) and/or Internet Service Provider (ISP) or any other relevant party or any other relevant authorities. The Vendor is not responsible to make arrangements with any of the said parties for the service connection for their respective subscription channels and/or internet access.
- 4) If the Purchaser requires internet access, the Purchaser will have to make direct arrangements with the Internet Service Provider and/or such relevant entities/authorities for internet services to the unit and to make all necessary payments to the Internet Service Provider and/or the relevant entities/authorities.
- 5) Where warranties are given by the manufacturers and/or contractors and/or suppliers of any of the equipment and/or appliances installed by the Vendor at the unit, the Vendor shall assign to the Purchaser such warranties at the time when possession of the unit is delivered to the Purchaser.
- 6) For cyclical maintenance work to be carried out to the building facade, owners shall allow access to the maintenance team.
- 7) While every reasonable care has been taken in preparing this brochure and the plans attached, the Developer and its agents cannot be held responsible for any inaccuracies therein. All statements, specifications and plans are believed to be correct but not to be regarded as statements or representations of fact. Visual representations, illustrations, photographs and renderings are intended to portray only impressions of the development and cannot be regarded as representation of facts. Photographs or images contained in this brochure do not necessarily represent as built standard specifications. All information and specifications are current at the time of press and are subject to change as may be required and cannot form part of an offer or contract. All plans are subject to any amendments approved by the building authorities. Floor areas are approximate measurements and subject to final survey. The choice of brand and model of fittings, equipment, installation and appliances supplied shall be at the sole discretion of the Vendor.

www.huttonsgroup.com

DEVELOPED BY



Name of Project: **Eon Shenton** Developer: **70 Shenton Pte Ltd (RCB No: 201006166W)**
Developer's Licence No.: **C0835** Tenure of Land: **99 years commencing from 6 October 2011** Lot No.: **Lot 415P and 1261A PT TS23 at 70 Shenton Way** Expected Date of TOP: **31 December 2019** Expected Date of Legal Completion: **31 December 2022** Building Plan No.: **A1276-00507-2010-BP01 dated 13 March 2012**

While every reasonable care has been taken in preparing this brochure and in constructing the models and showflats, the Developer and the Marketing Agents cannot be held responsible for any inaccuracies or omissions. Visual representations, models, showflats displays and illustrations, photographs, art renderings and other graphic representations and references are intended to portray only artist's impressions of the development and cannot be regarded as representations of fact. The property is subject to final inspection by relevant authorities to comply with the current code of practice.

All information, specifications, renderings, visual representations and plans are correct at the time of publication and are subject to change as may be required by us and/or the competent authorities and shall not form part of any offer and contract nor constitute any warranty by us and shall not be regarded as statements or representations of fact. All plans are subject to amendments as directed and/or approved by the building authorities. All areas are approximate measurements only and subject to final survey. The Sale & Purchase Agreement shall form the entire agreement between us as the Developer and the Purchaser and shall supercede all statements, representations or promises made prior to the signing of the Sale & Purchase Agreement and shall in no way be modified by any statements, representations or promises made by us or the Marketing Agents.



www.huttonsgroup.com

**RESIDENTIAL
FLOOR PLANS**





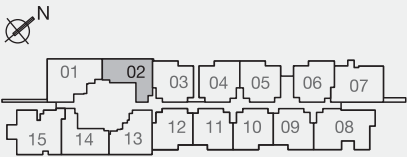
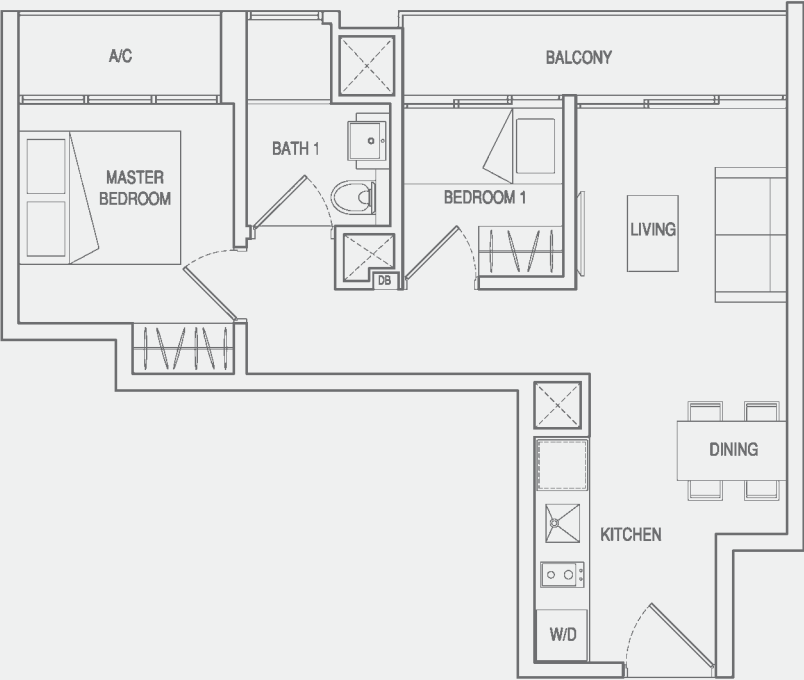
Artist's Impression

Living in the city brightens every heart. Imagine living in a development that brightens the city. Designed with fascinating lights that attract every attention, EON SHENTON stands tall as the beacon of light in the area especially when night falls. Towering at a height of 32-storey, it is made up of shops, offices and residential units as well as 4 levels of multi-storey carparks and 2 levels of basement carparks for everyone's convenience. The facade is carefully designed with 3 outstanding sky decks offering hotel-style facilities and breathtaking unblocked views of the city skyline. It is truly a unique development that will shape the future of commerce and recreation.

www.huttonsgroup.com

TYPE A1
2-BEDROOM

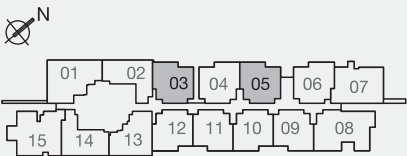
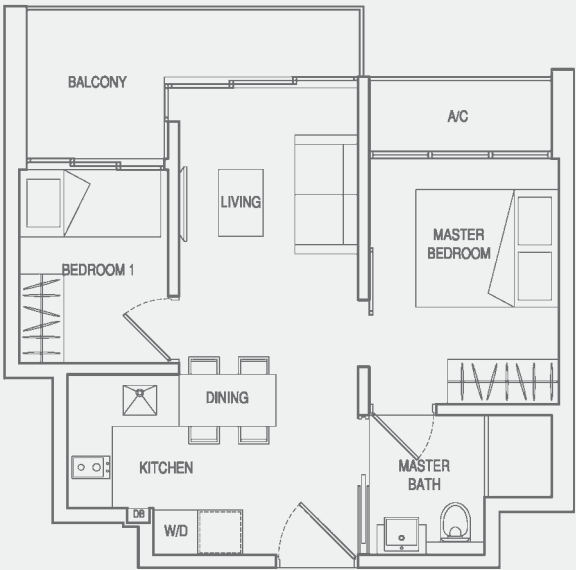
Unit #23-02 to #29-02
Area 49 Sqm / 527 Sqft



www.huttonsgroup.com

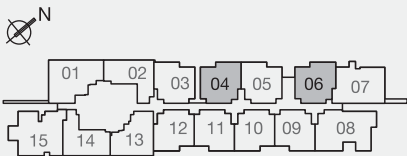
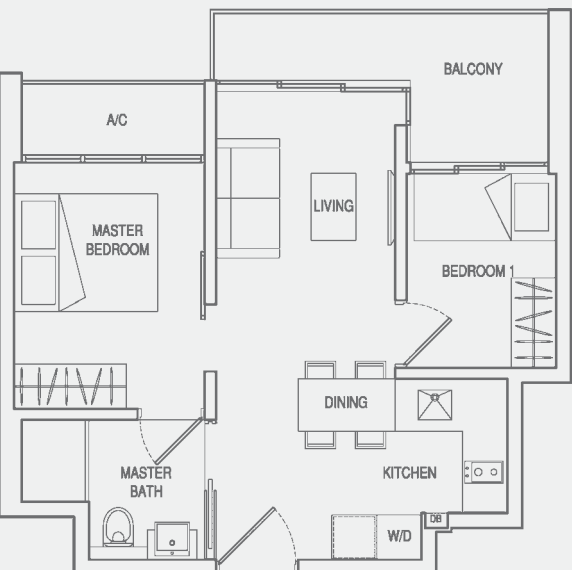
TYPE A2
2-BEDROOM

Unit #25-03 to #29-03
#25-05 to #29-05
Area 50 Sqm / 538 Sqft



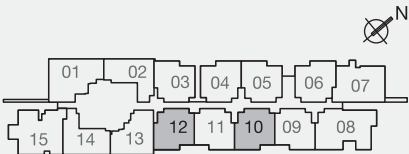
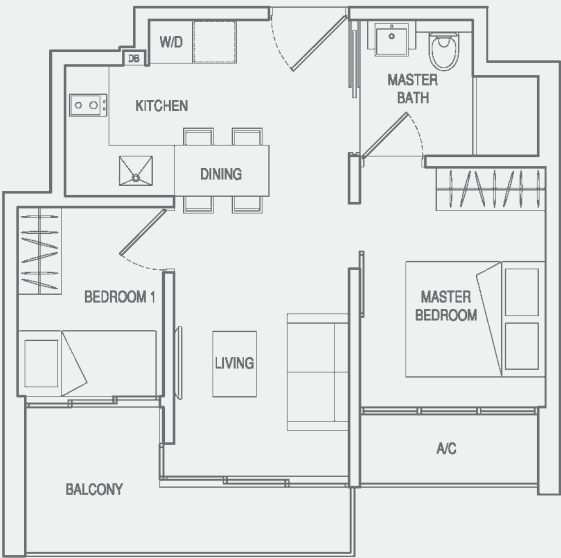
TYPE A2(m)
2-BEDROOM

Unit #25-04 to #29-04
#23-06 to #29-06
Area 50 Sqm / 538 Sqft



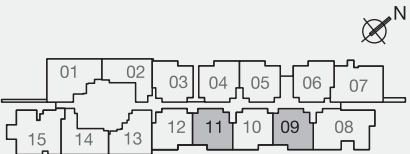
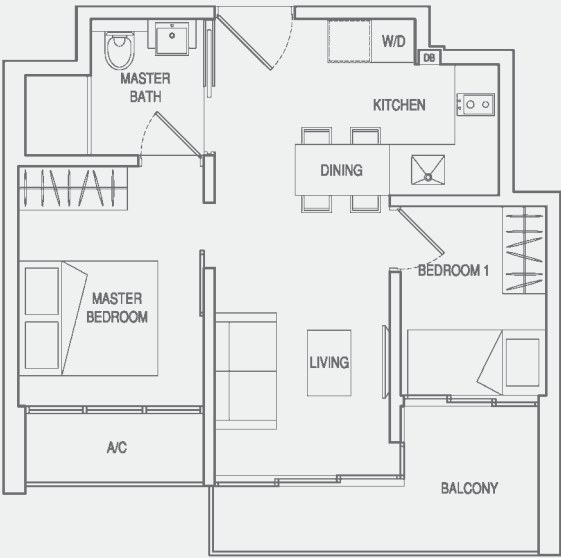
TYPE A3
2-BEDROOM

Unit #23-10 to #29-10
 #23-12 to #29-12
Area 50 Sqm / 538 Sqft



TYPE A3(m)
2-BEDROOM

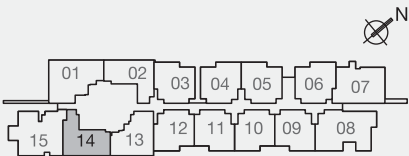
Unit #23-09 to #29-09
 #23-11 to #29-11
Area 50 Sqm / 538 Sqft



www.huttonsgroup.com

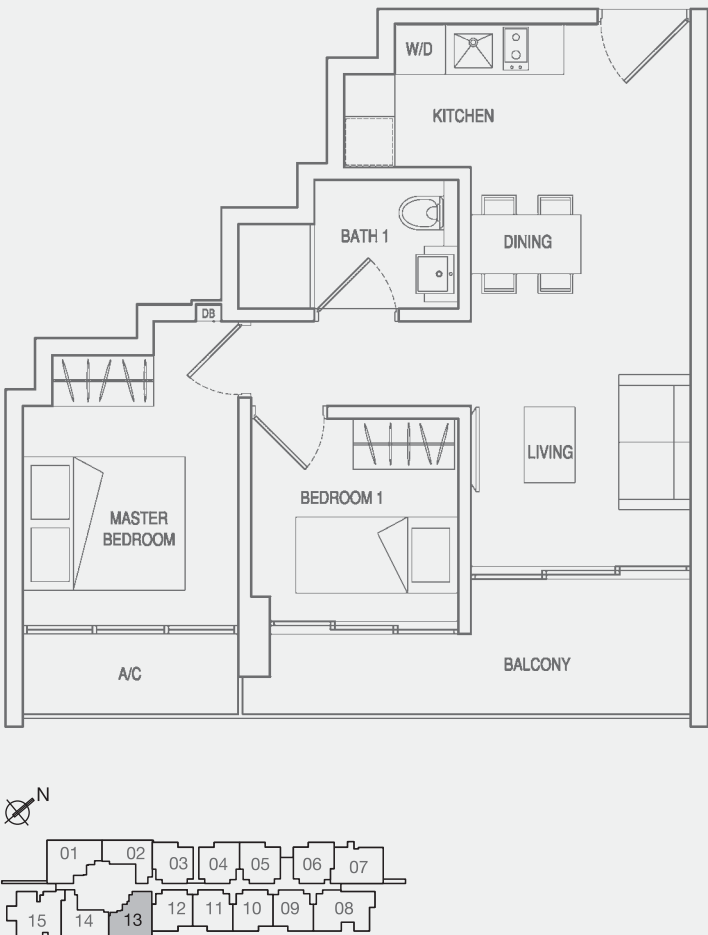
TYPE A4
2-BEDROOM

Unit #23-14 to #29-14
Area 50 Sqm / 538 Sqft



TYPE A5
2-BEDROOM

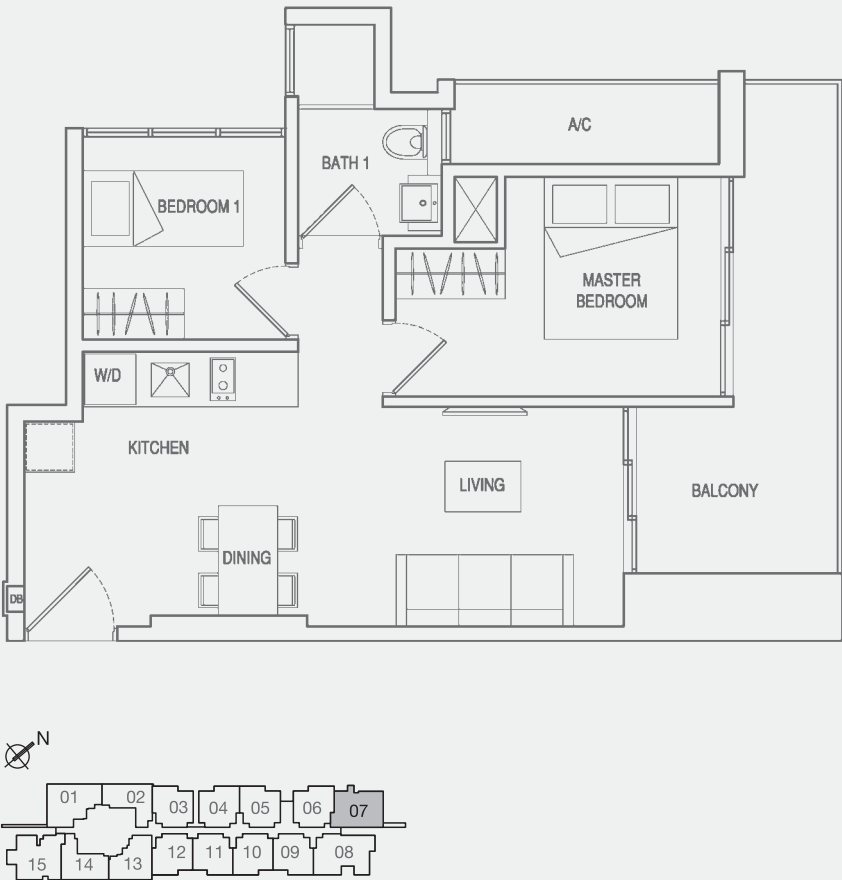
Unit #23-13 to #29-13
Area 54 Sqm / 581 Sqft



www.huttonsgroup.com

TYPE A6
2-BEDROOM

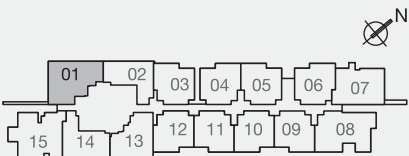
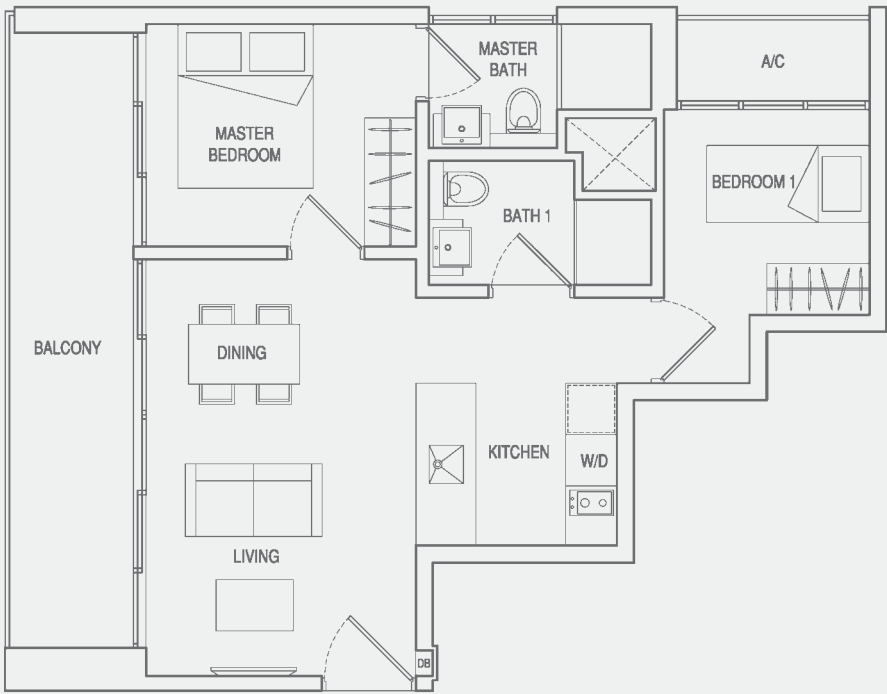
Unit #23-07 to #29-07
Area 60 Sqm / 646 Sqft



All areas are inclusive of a/c ledge, if any. All plans are subject to amendments as approved by the relevant authorities. Floor areas are approximate measurements and subject to final survey.

TYPE A7
2-BEDROOM

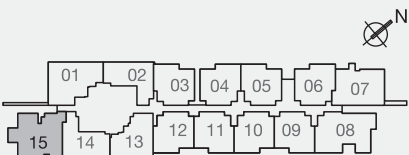
Unit #23-01, #24-01
 #26-01 to #29-01
Area 64 Sqm / 689 Sqft



www.huttonsgroup.com

TYPE B1
3-BEDROOM

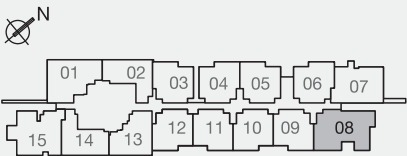
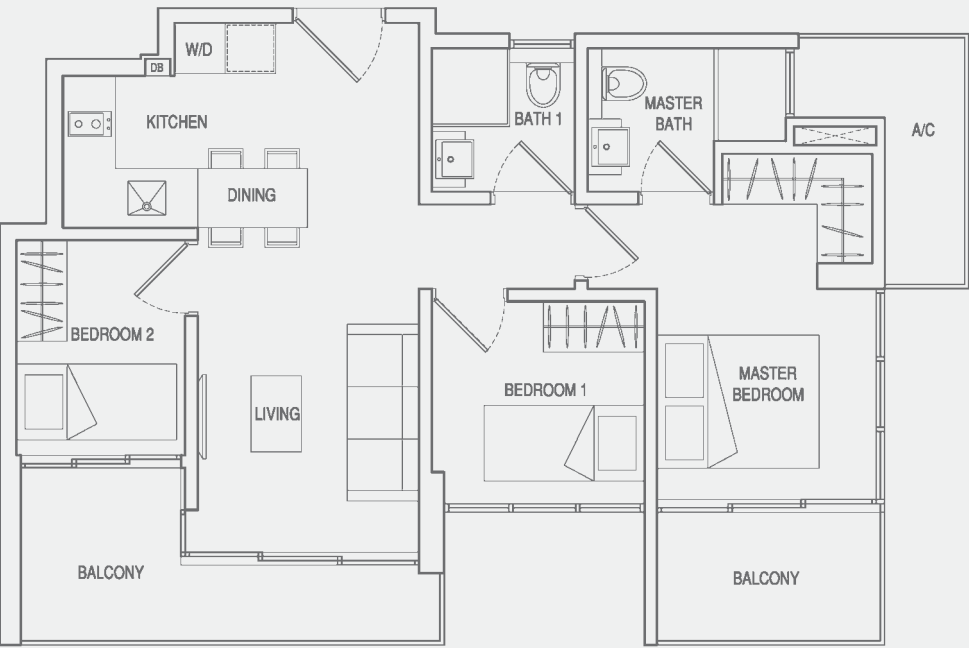
Unit #23-15 to #29-15
Area 70 Sqm / 754 Sqft



All areas are inclusive of a/c ledge, if any. All plans are subject to amendments as approved by the relevant authorities. Floor areas are approximate measurements and subject to final survey.

TYPE B2
3-BEDROOM

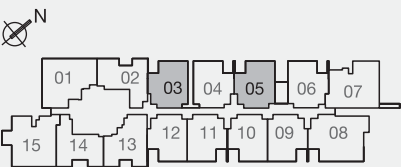
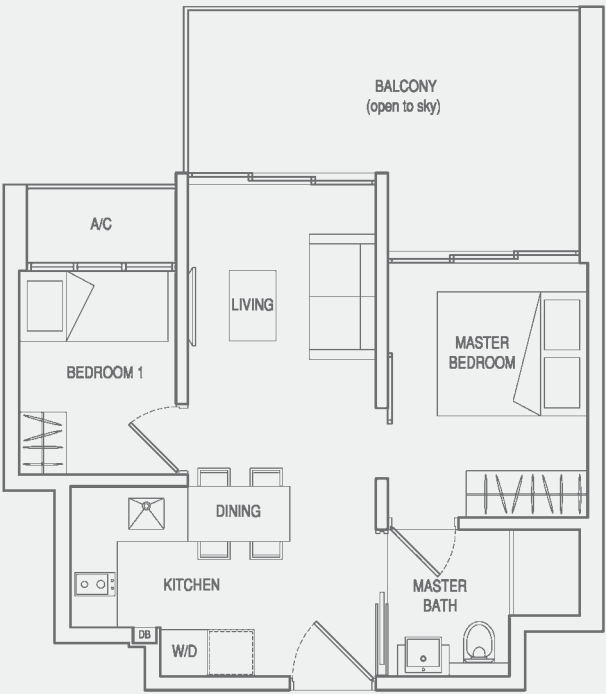
Unit #23-08 to #28-08
Area 73 Sqm / 786 Sqft



www.huttonsgroup.com

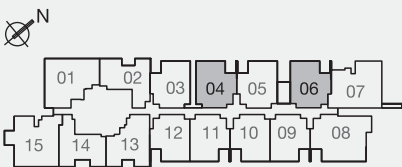
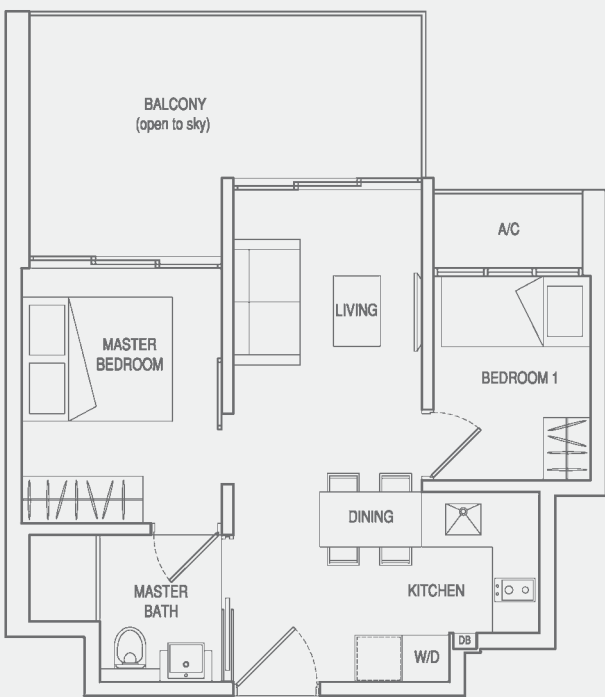
TYPE C1
2-BEDROOM WITH BALCONY (OPEN TO SKY)

Unit #30-03, #30-05
Area 56 Sqm / 603 Sqft



TYPE C1(m)
2-BEDROOM WITH BALCONY (OPEN TO SKY)

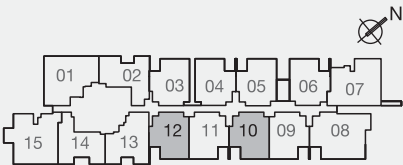
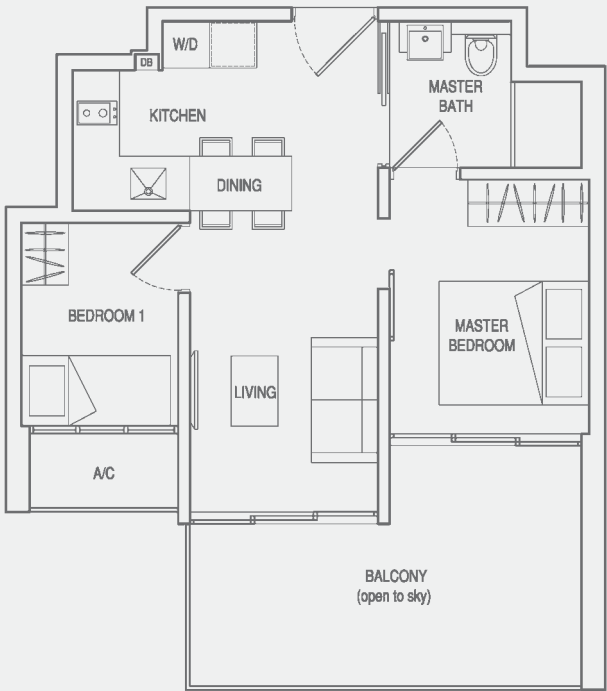
Unit #30-04, #30-06
Area 56 Sqm / 603 Sqft



All areas are inclusive of a/c ledge, if any. All plans are subject to amendments as approved by the relevant authorities. Floor areas are approximate measurements and subject to final survey.

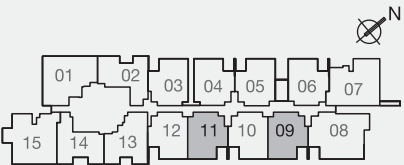
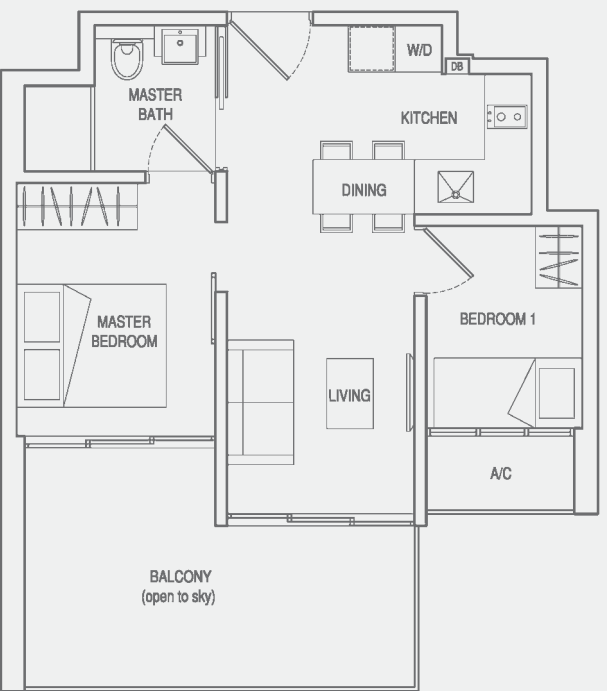
TYPE C2
2-BEDROOM WITH BALCONY (OPEN TO SKY)

Unit #30-10, #30-12
Area 56 Sqm / 603 Sqft



TYPE C2(m)
2-BEDROOM WITH BALCONY (OPEN TO SKY)

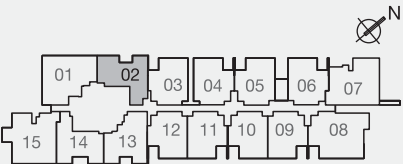
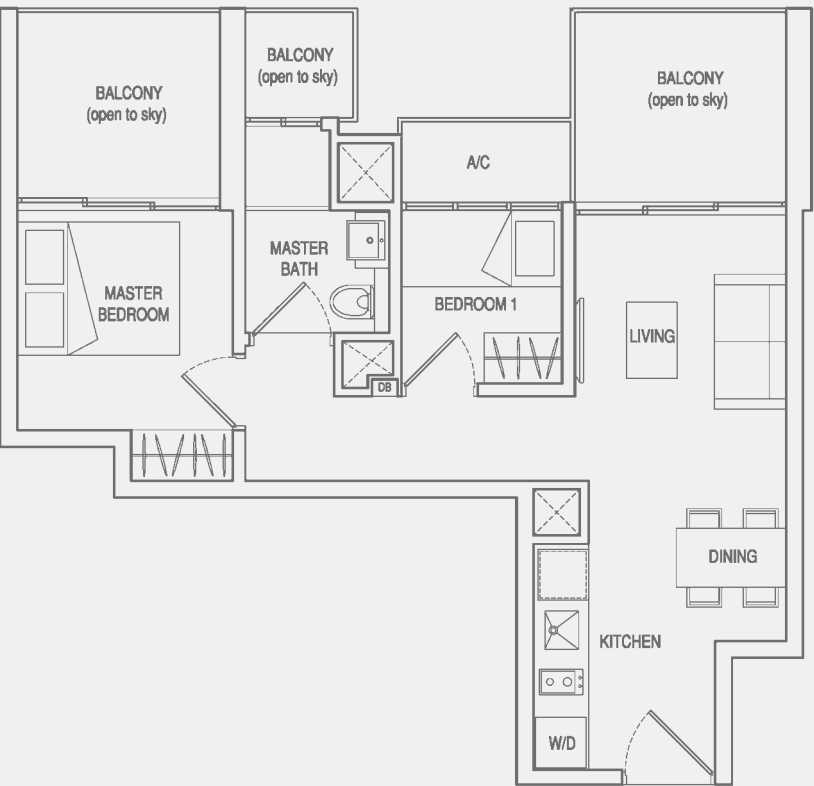
Unit #30-09, #30-11
Area 56 Sqm / 603 Sqft



www.huttonsgroup.com

TYPE C3
2-BEDROOM WITH BALCONY (OPEN TO SKY)

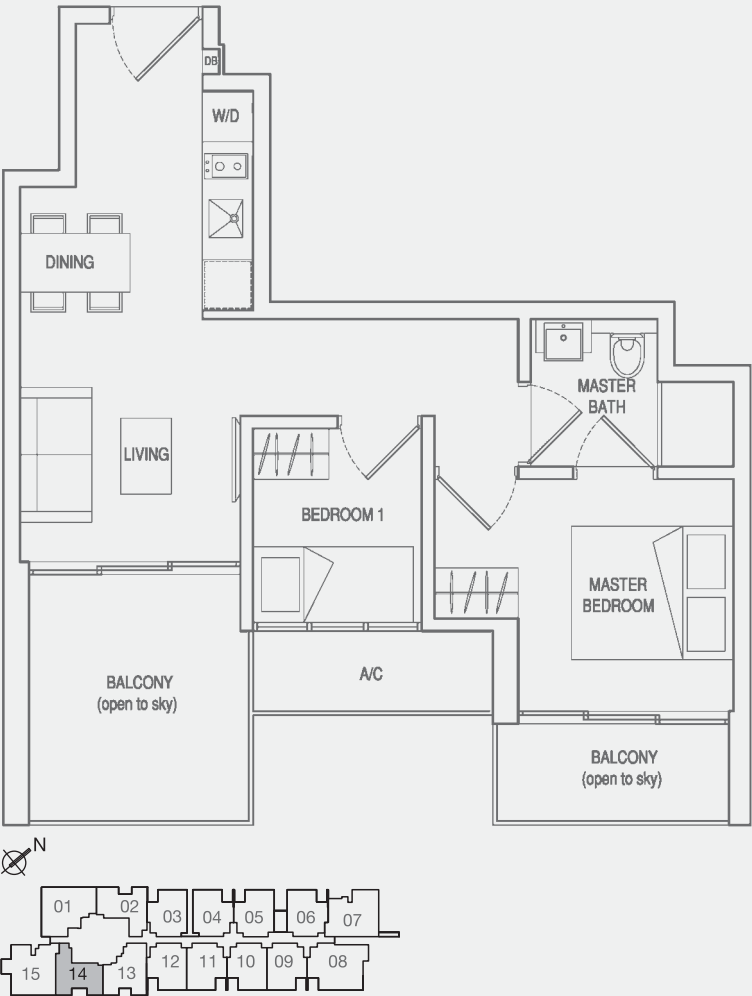
Unit #30-02
Area 58 Sqm / 624 Sqft



All areas are inclusive of a/c ledge, if any. All plans are subject to amendments as approved by the relevant authorities. Floor areas are approximate measurements and subject to final survey.

TYPE C4
2-BEDROOM WITH BALCONY (OPEN TO SKY)

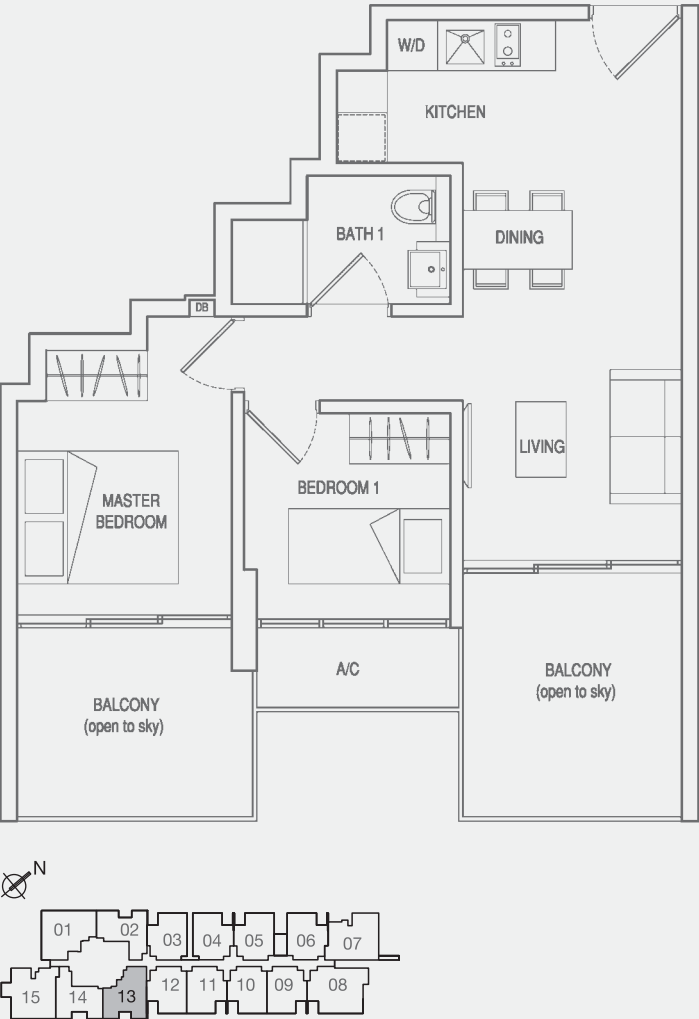
Unit #30-14
Area 58 Sqm / 624 Sqft



www.huttonsgroup.com

TYPE C5
2-BEDROOM WITH BALCONY (OPEN TO SKY)

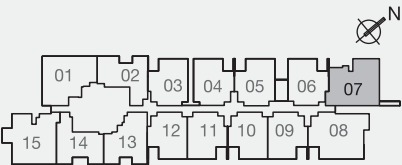
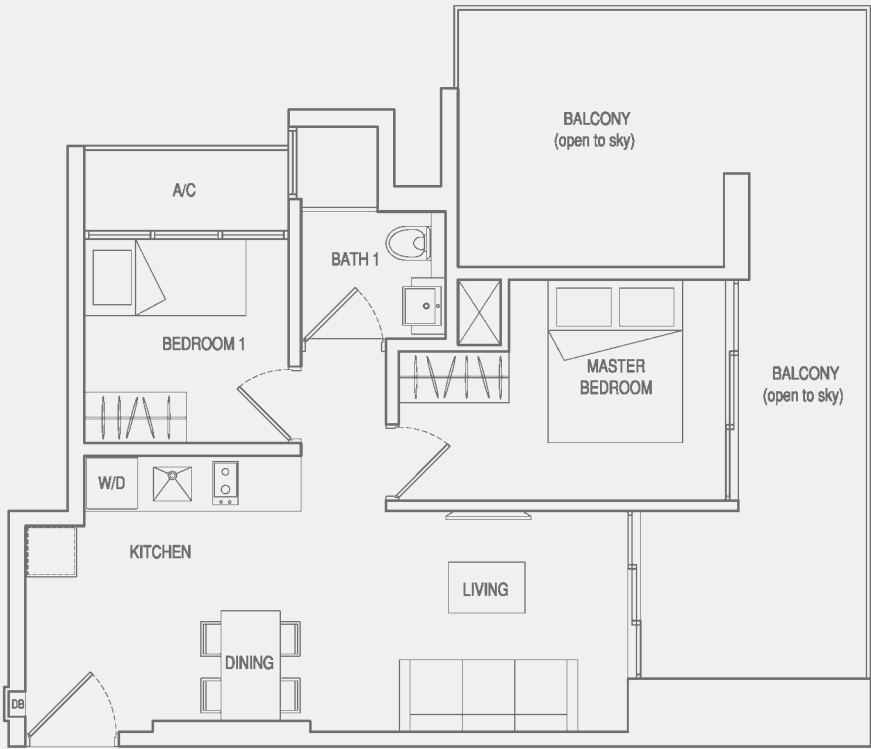
Unit #30-13
Area 62 Sqm / 667 Sqft



All areas are inclusive of a/c ledge, if any. All plans are subject to amendments as approved by the relevant authorities. Floor areas are approximate measurements and subject to final survey.

TYPE C6
2-BEDROOM WITH BALCONY (OPEN TO SKY)

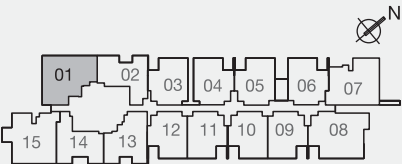
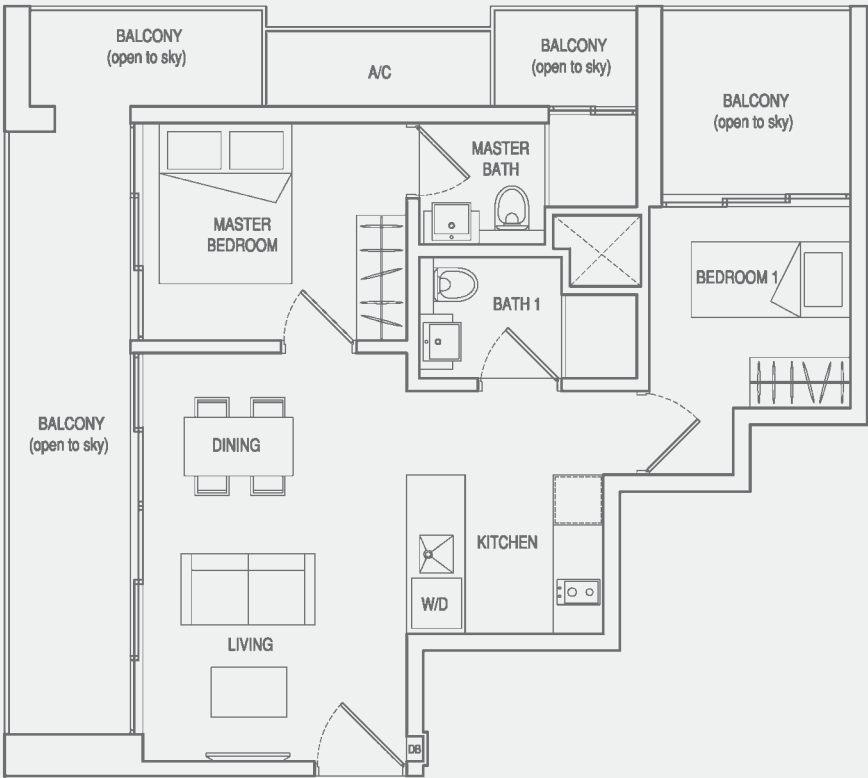
Unit #30-07
Area 74 Sqm / 797 Sqft



www.huttonsgroup.com

TYPE C7
2-BEDROOM WITH BALCONY (OPEN TO SKY)

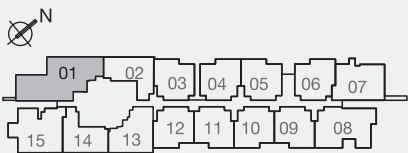
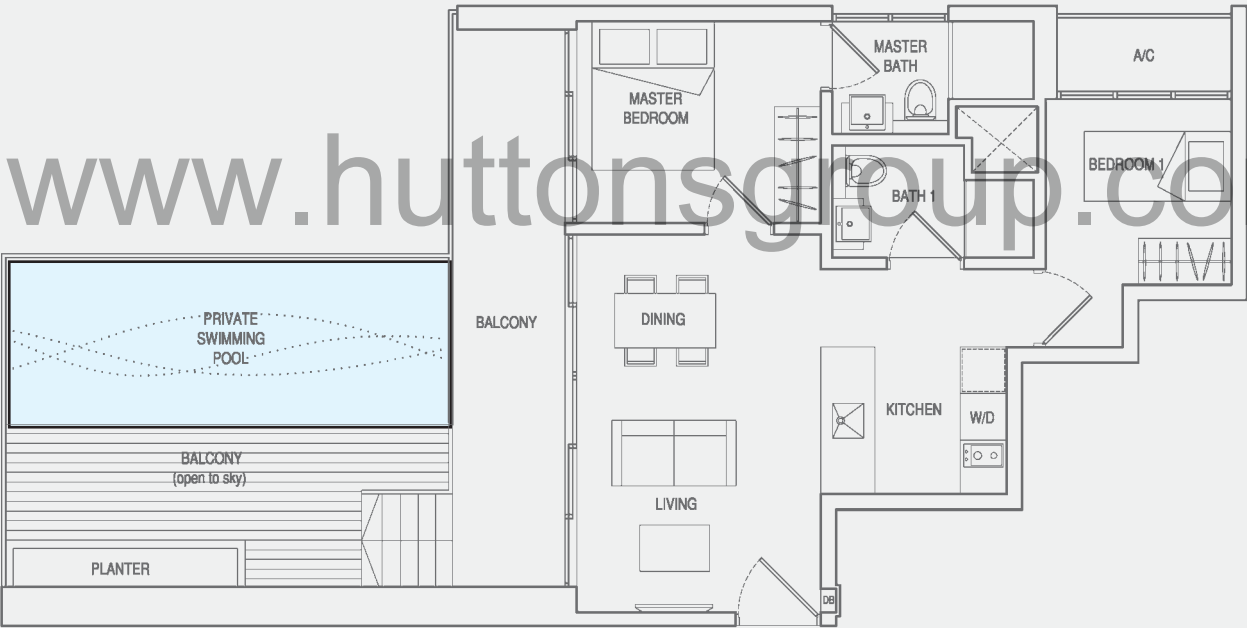
Unit #30-01
Area 82 Sqm / 883 Sqft



All areas are inclusive of a/c ledge, if any. All plans are subject to amendments as approved by the relevant authorities. Floor areas are approximate measurements and subject to final survey.

TYPE C8
2-BEDROOM WITH BALCONY (OPEN TO SKY)

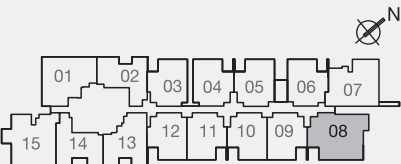
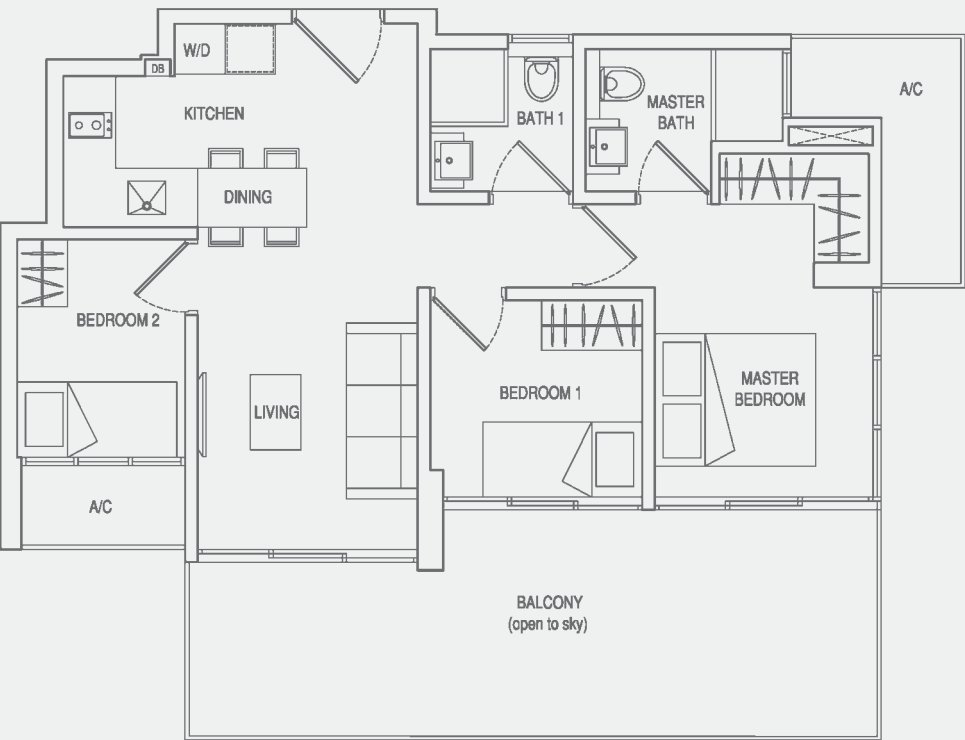
Unit #25-01
Area 90 Sqm / 969 Sqft



All areas are inclusive of a/c ledge, if any. All plans are subject to amendments as approved by the relevant authorities. Floor areas are approximate measurements and subject to final survey.

TYPE D1
3-BEDROOM WITH BALCONY (OPEN TO SKY)

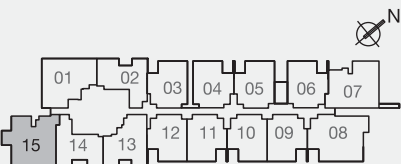
Unit #30-08
Area 91 Sqm / 980 Sqft



www.huttonsgroup.com

TYPE D2
3-BEDROOM WITH BALCONY (OPEN TO SKY)

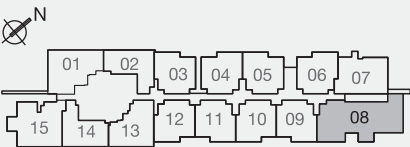
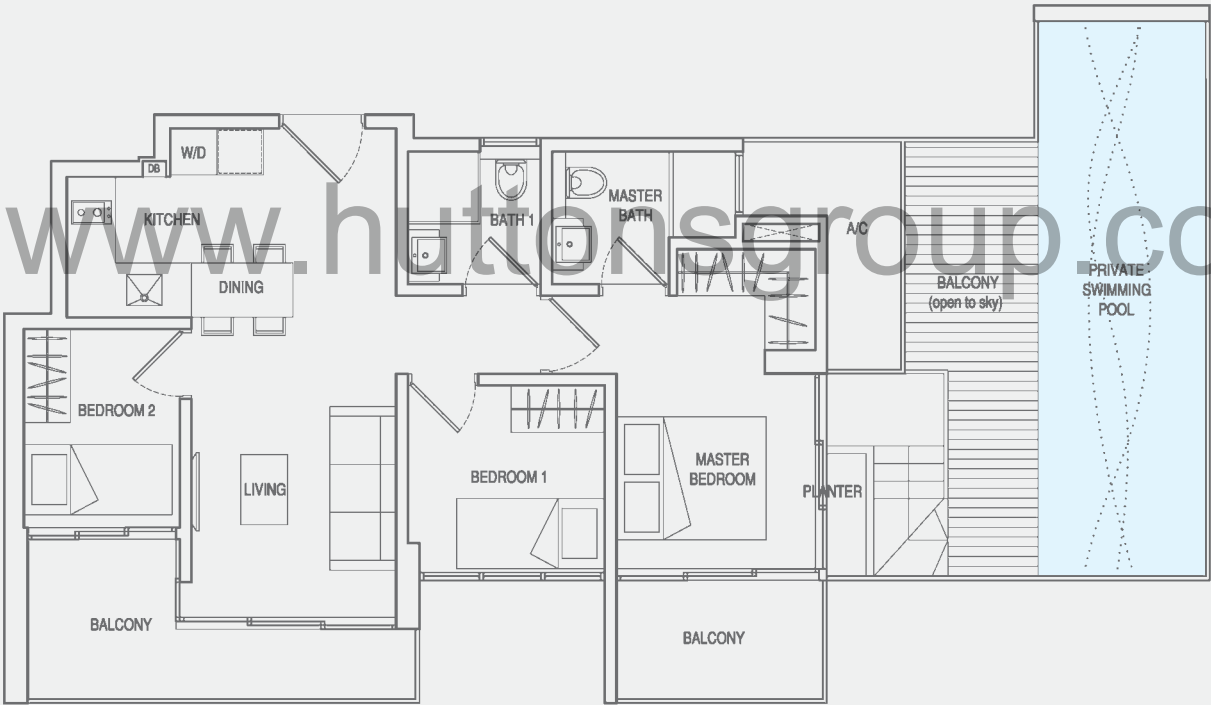
Unit #30-15
Area 88 Sqm / 947 Sqft



All areas are inclusive of a/c ledge, if any. All plans are subject to amendments as approved by the relevant authorities. Floor areas are approximate measurements and subject to final survey.

TYPE D3
3-BEDROOM WITH BALCONY (OPEN TO SKY)

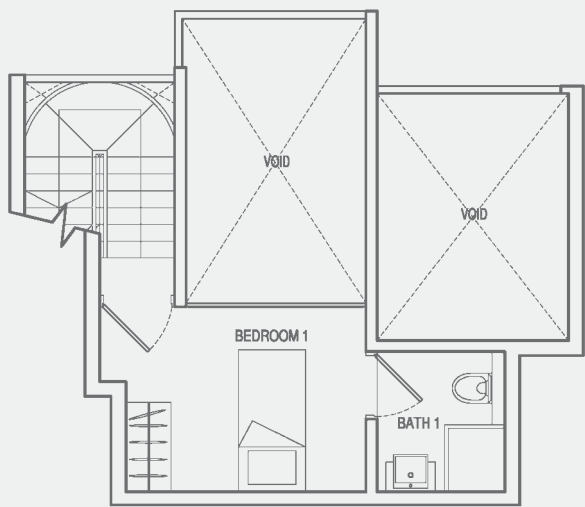
Unit #29-08
Area 101 Sqm / 1087 Sqft



All areas are inclusive of a/c ledge, if any. All plans are subject to amendments as approved by the relevant authorities. Floor areas are approximate measurements and subject to final survey.

TYPE DP
DUPLEX 2-BEDROOM

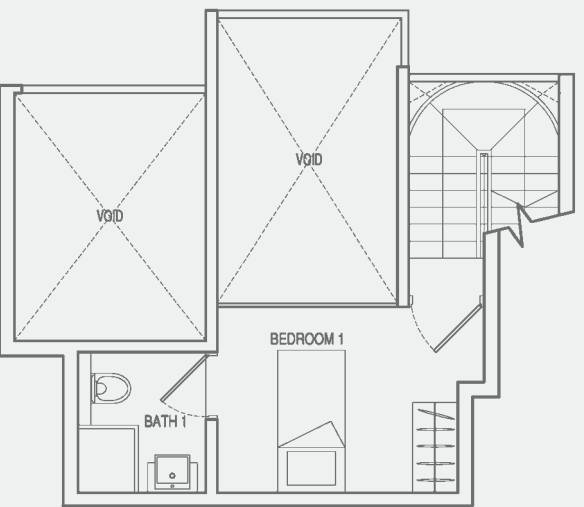
Unit #23-03, #23-05
Area 88 Sqm / 947 Sqft



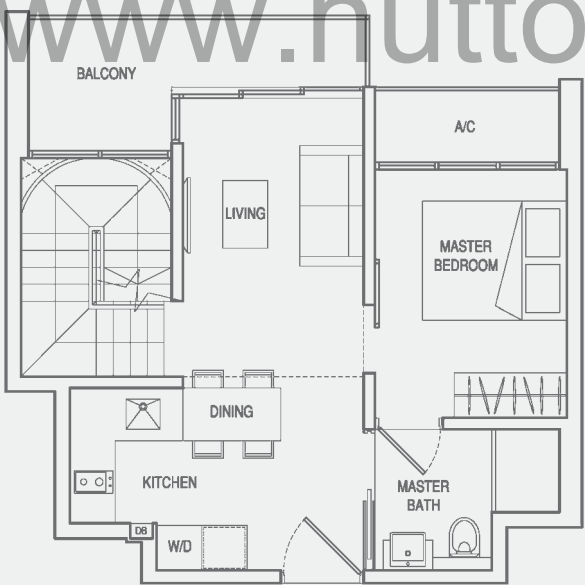
UPPER STOREY

TYPE DP(m)
DUPLEX 2-BEDROOM

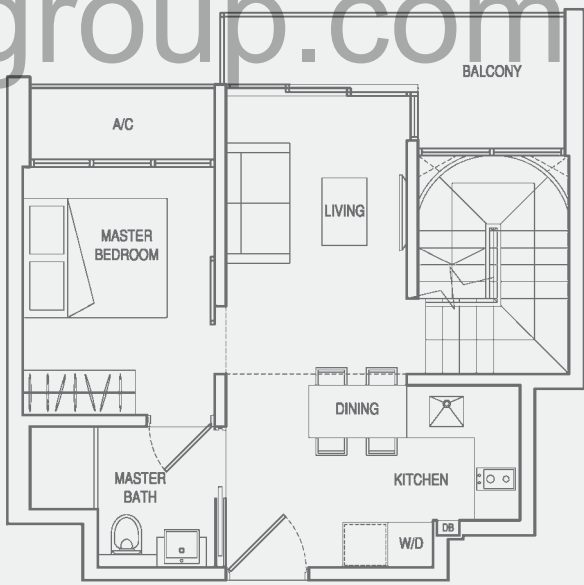
Unit #23-04
Area 88 Sqm / 947 Sqft



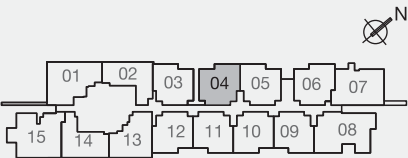
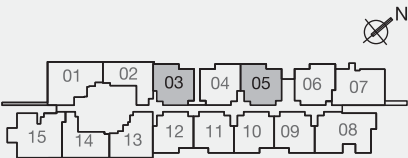
UPPER STOREY



LOWER STOREY



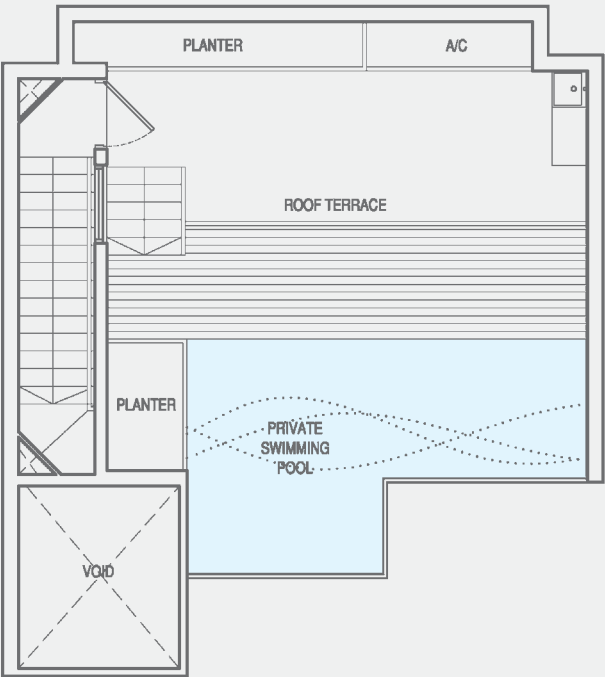
LOWER STOREY



All areas are inclusive of a/c ledge, if any. All plans are subject to amendments as approved by the relevant authorities. Floor areas are approximate measurements and subject to final survey.

TYPE PH1
2-BEDROOM PENTHOUSE

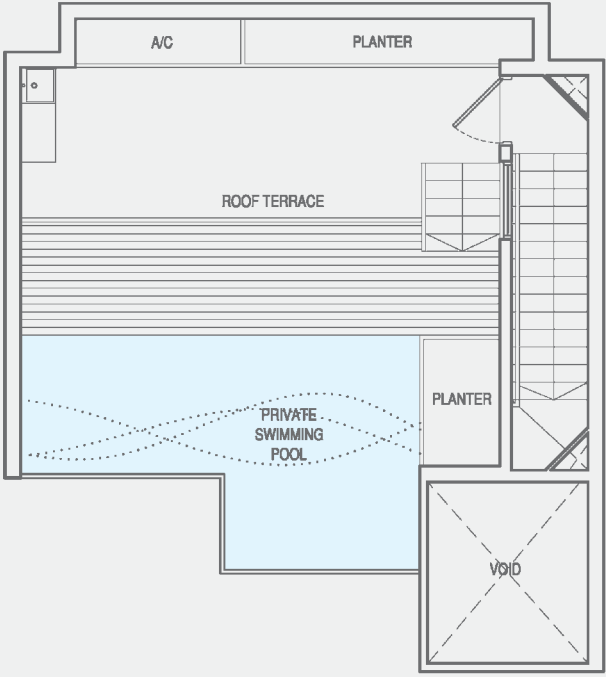
Unit #31-10, #31-12
Area 97 Sqm / 1044 Sqft



UPPER STOREY

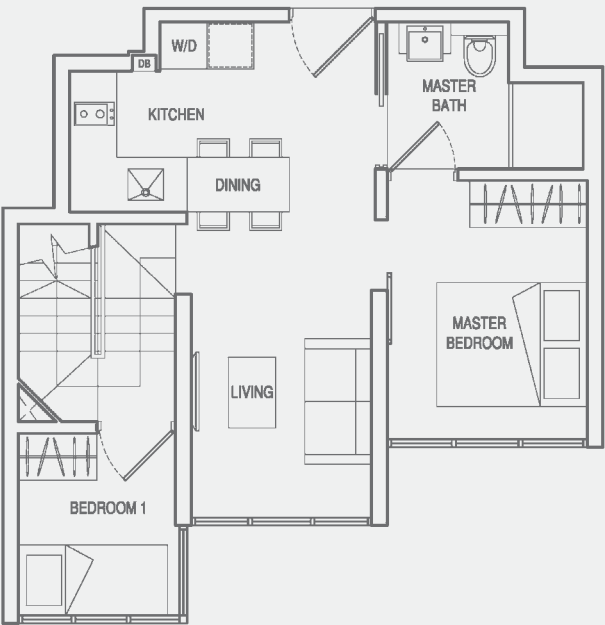
TYPE PH1(m)
2-BEDROOM PENTHOUSE

Unit #31-09, #31-11
Area 97 Sqm / 1044 Sqft

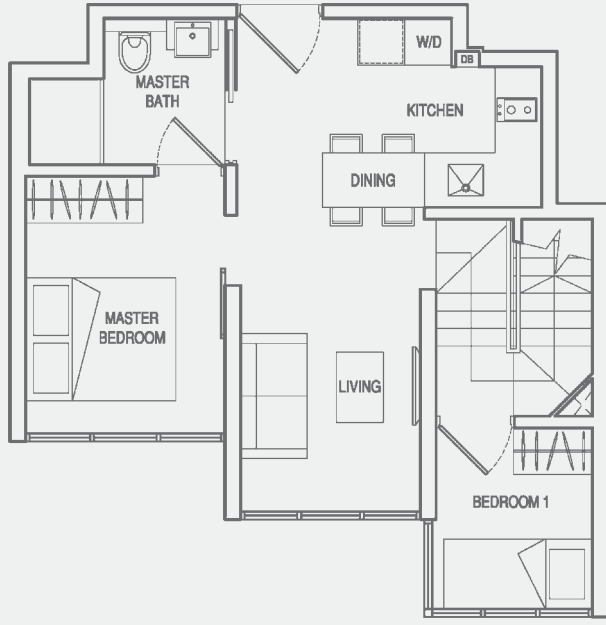


UPPER STOREY

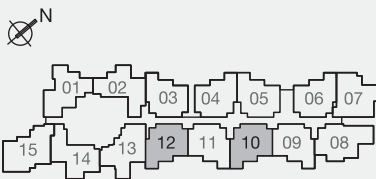
www.huttonsgroup.com



LOWER STOREY



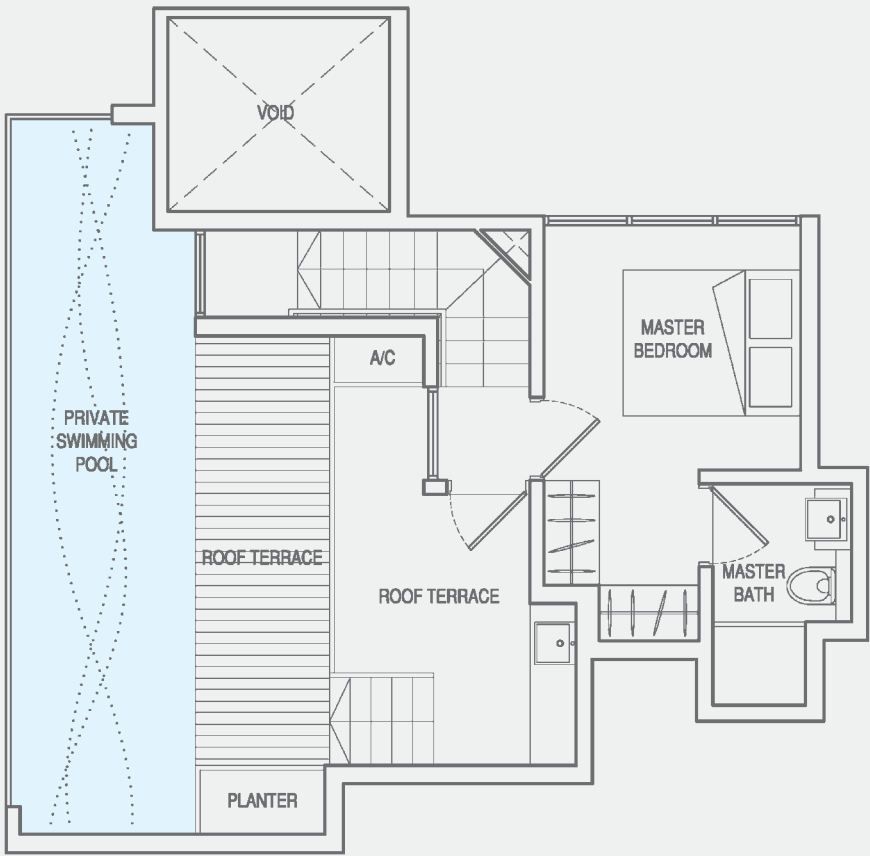
LOWER STOREY



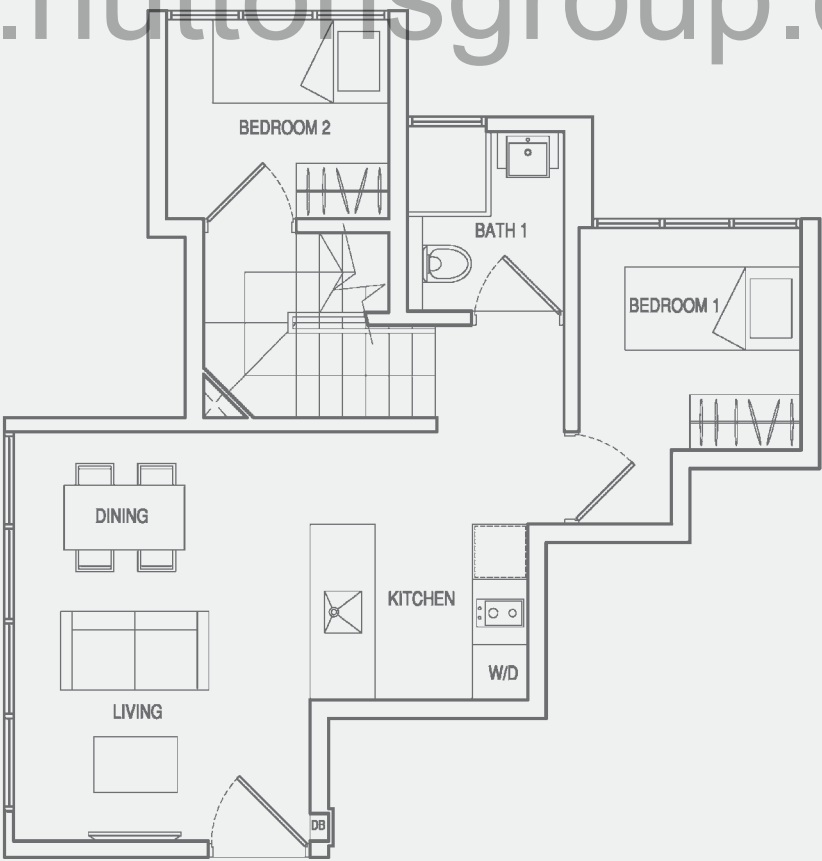
All areas are inclusive of a/c ledge, if any. All plans are subject to amendments as approved by the relevant authorities. Floor areas are approximate measurements and subject to final survey.

TYPE PH2
3-BEDROOM PENTHOUSE

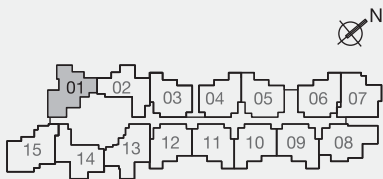
Unit #31-01
Area 107 Sqm / 1152 Sqft



UPPER STOREY

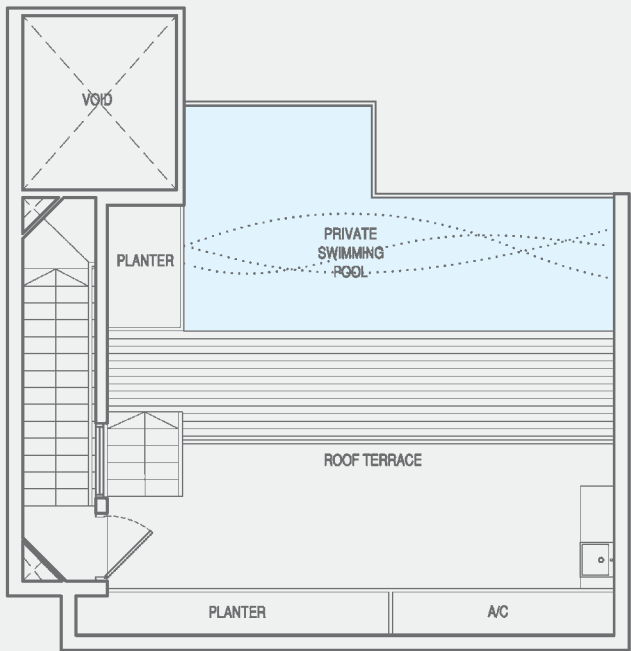


LOWER STOREY



TYPE PH3
2-BEDROOM PENTHOUSE

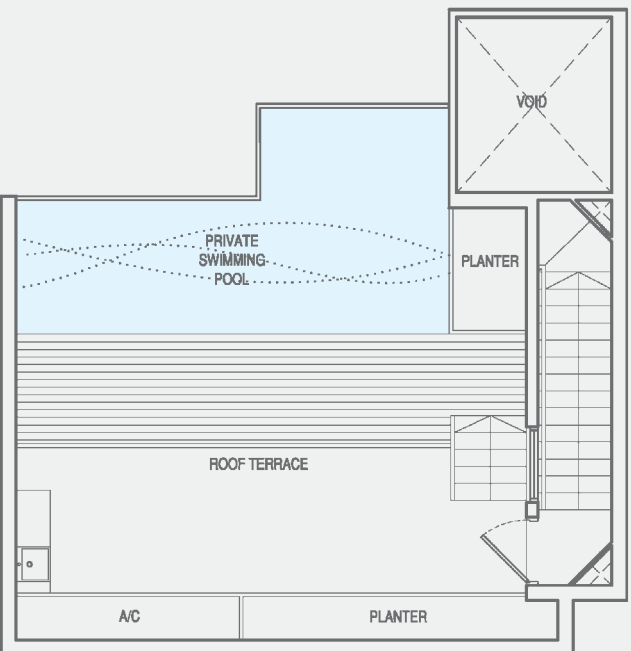
Unit #31-03
Area 101 Sqm / 1087 Sqft



UPPER STOREY

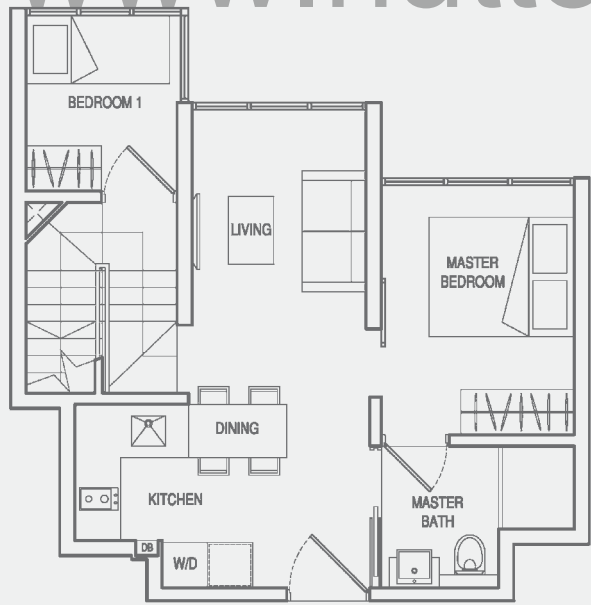
TYPE PH3(m)
2-BEDROOM PENTHOUSE

Unit #31-04
Area 101 Sqm / 1087 Sqft

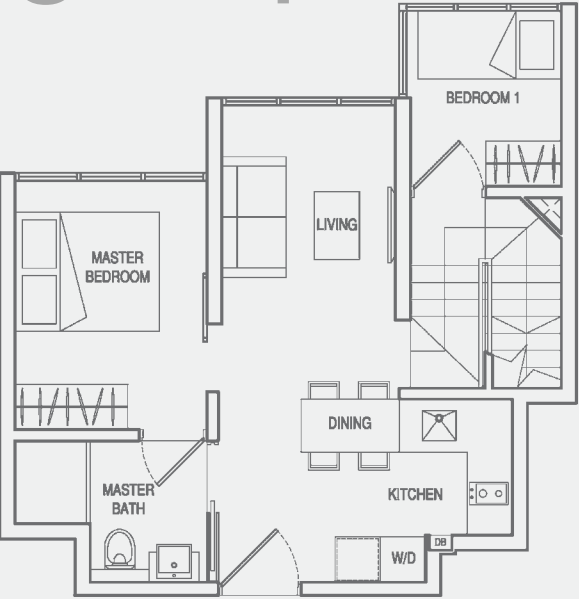


UPPER STOREY

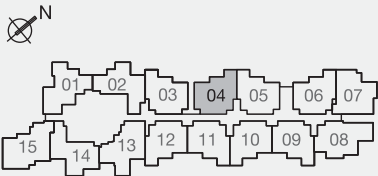
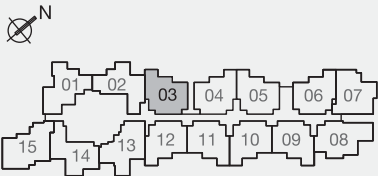
www.huttonsgroup.com



LOWER STOREY



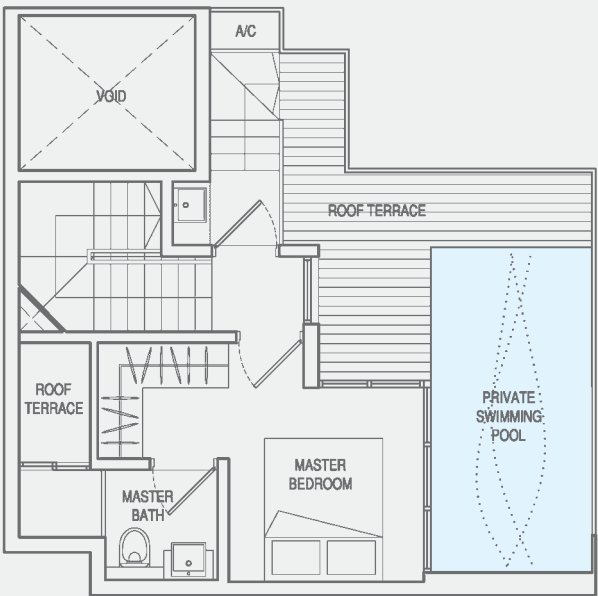
LOWER STOREY



All areas are inclusive of a/c ledge, if any. All plans are subject to amendments as approved by the relevant authorities. Floor areas are approximate measurements and subject to final survey.

TYPE PH4
3-BEDROOM PENTHOUSE

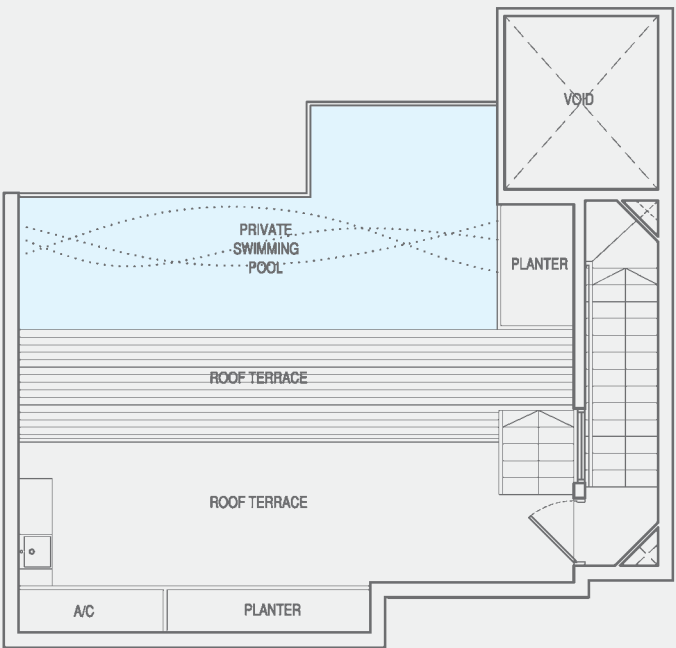
Unit #31-07
Area 99 Sqm / 1066 Sqft



UPPER STOREY

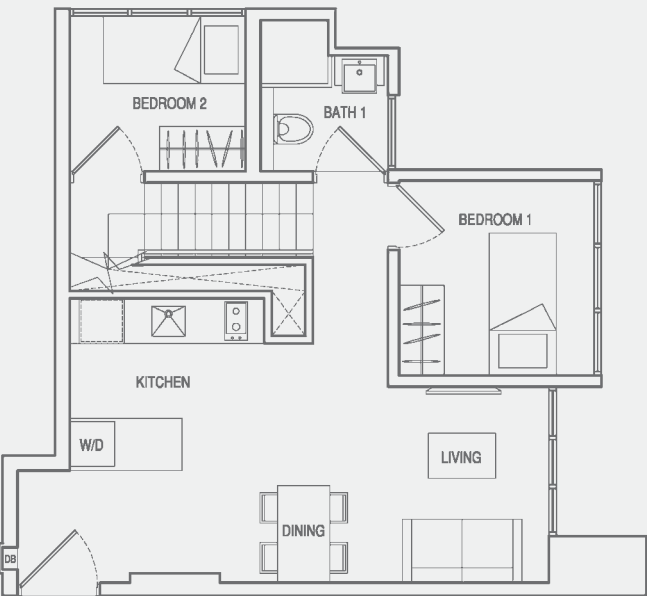
TYPE PH5
2-BEDROOM PENTHOUSE

Unit #31-06
Area 103 Sqm / 1109 Sqft

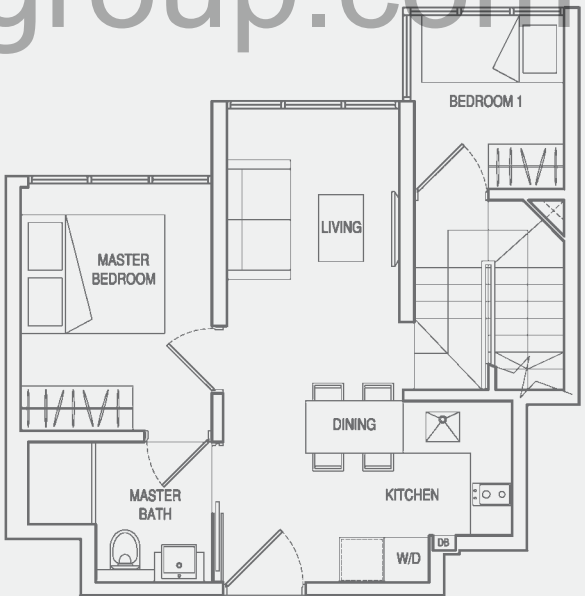


UPPER STOREY

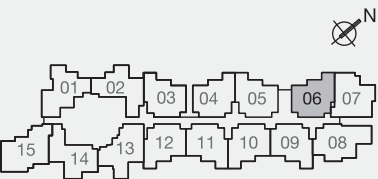
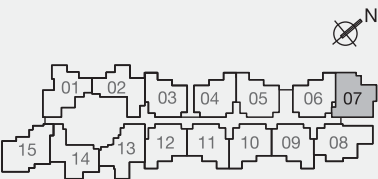
www.huttonsgroup.com



LOWER STOREY



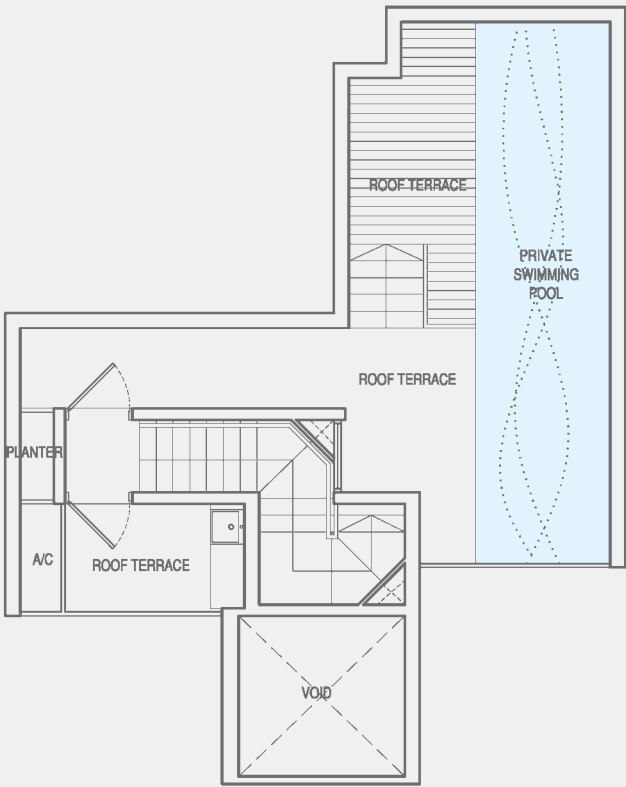
LOWER STOREY



All areas are inclusive of a/c ledge, if any. All plans are subject to amendments as approved by the relevant authorities. Floor areas are approximate measurements and subject to final survey.

TYPE PH6
2-BEDROOM PENTHOUSE

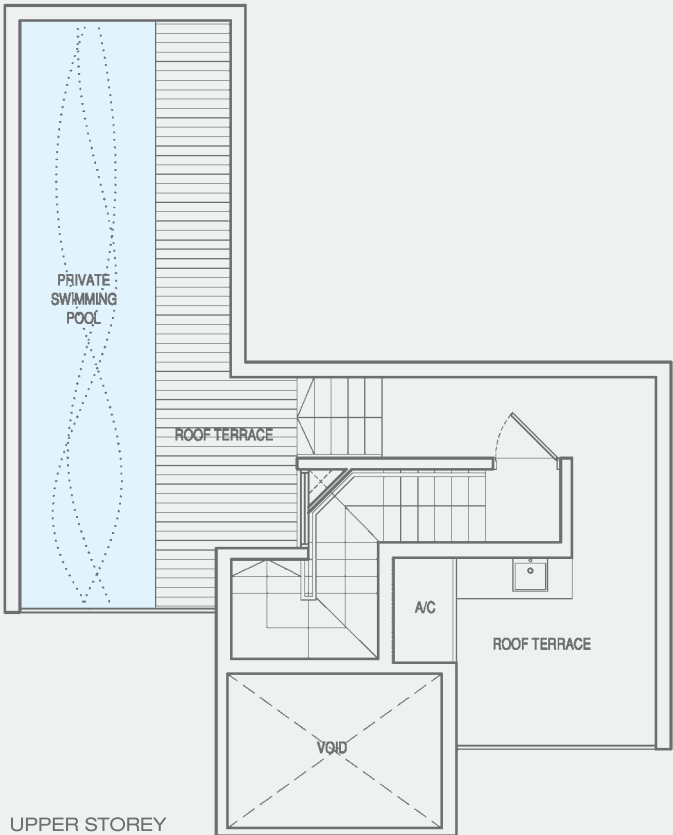
Unit #31-13
Area 98 Sqm / 1055 Sqft



UPPER STOREY

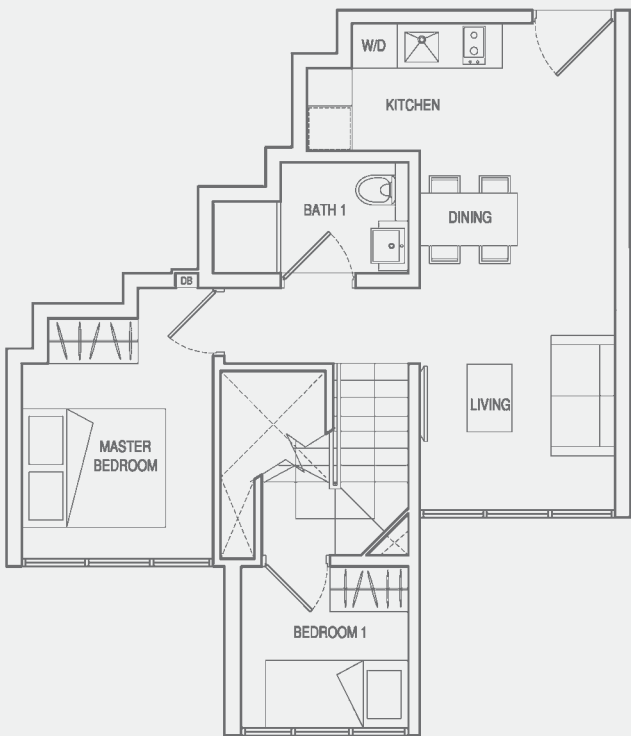
TYPE PH7
2-BEDROOM PENTHOUSE

Unit #31-14
Area 105 Sqm / 1130 Sqft

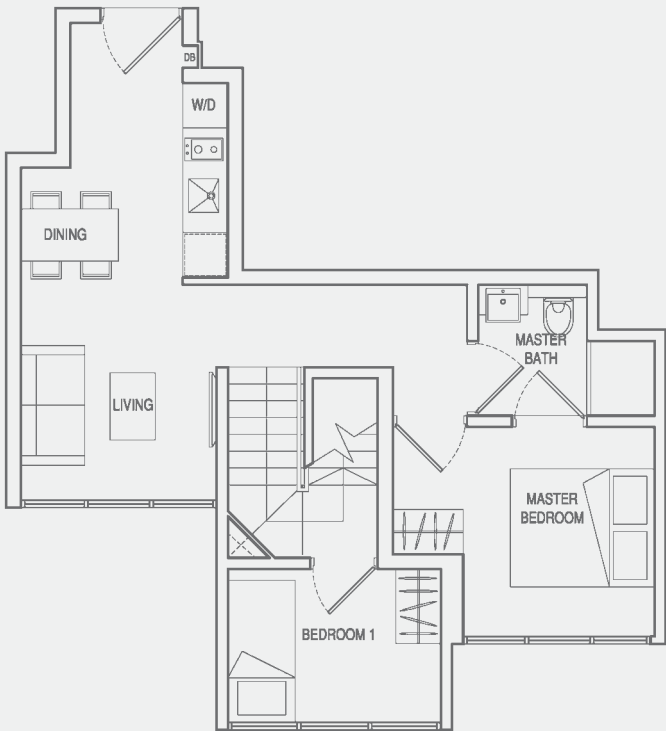


UPPER STOREY

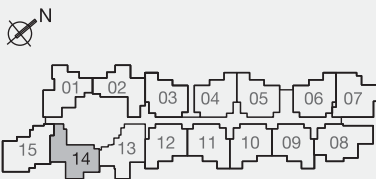
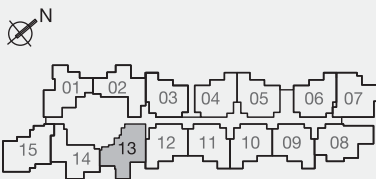
www.huttonsgroup.com



LOWER STOREY



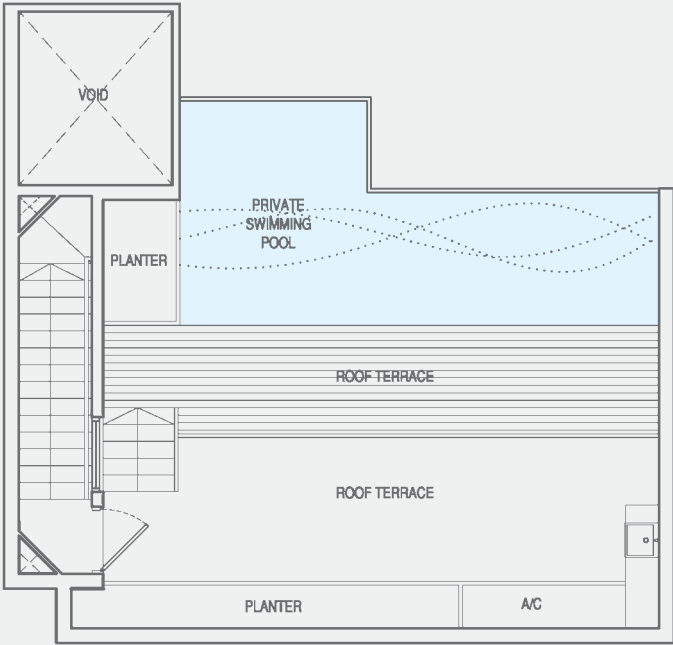
LOWER STOREY



All areas are inclusive of a/c ledge, if any. All plans are subject to amendments as approved by the relevant authorities. Floor areas are approximate measurements and subject to final survey.

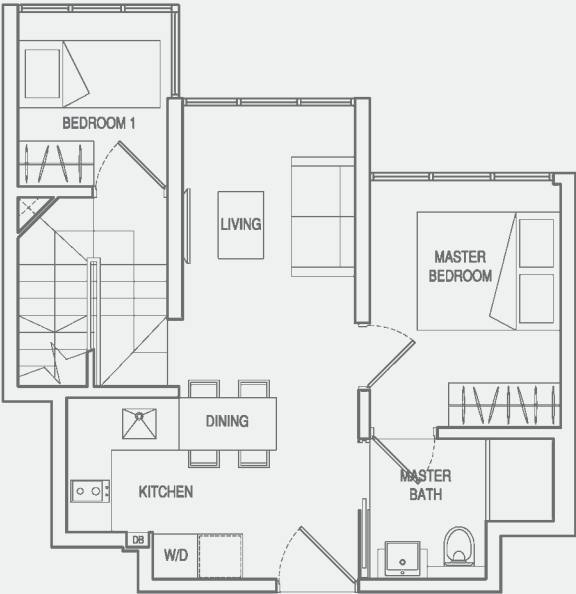
TYPE PH8
2-BEDROOM PENTHOUSE

Unit #31-05
Area 105 Sqm / 1130 Sqft

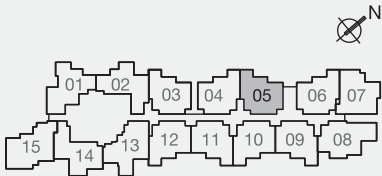


UPPER STOREY

www.huttonsgroup.com

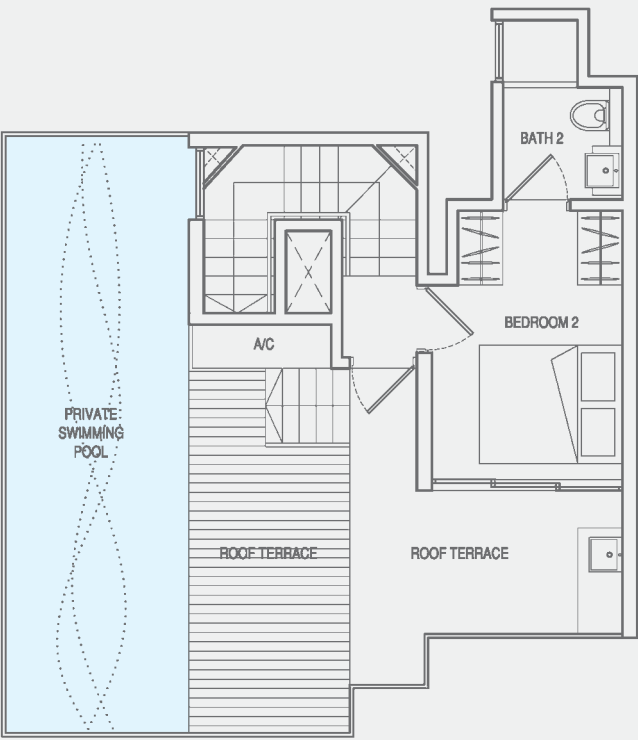


LOWER STOREY



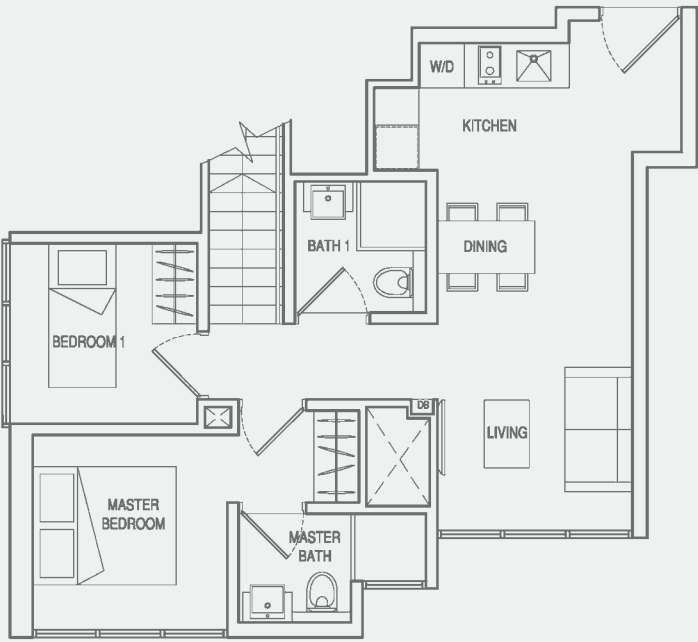
TYPE PH9
3-BEDROOM PENTHOUSE

Unit #31-15
Area 114 Sqm / 1227 Sqft

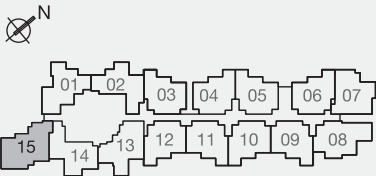


UPPER STOREY

www.huttonsgroup.com



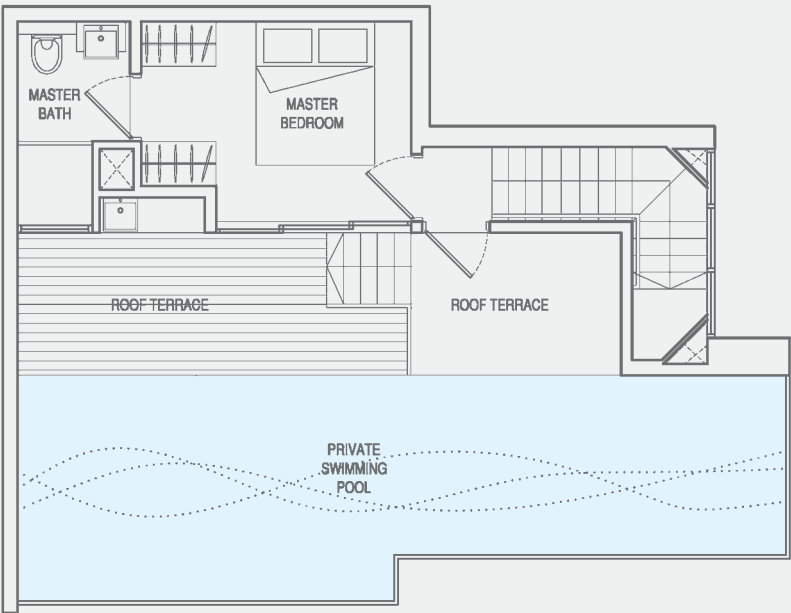
LOWER STOREY



All areas are inclusive of a/c ledge, if any. All plans are subject to amendments as approved by the relevant authorities. Floor areas are approximate measurements and subject to final survey.

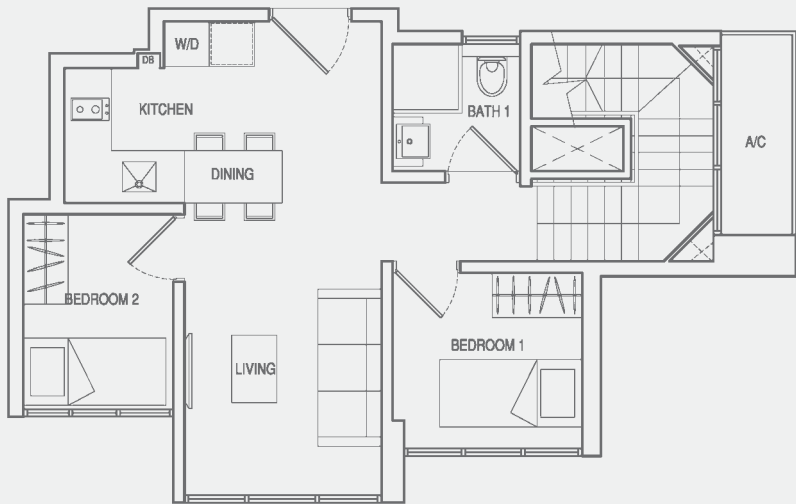
TYPE PH10
3-BEDROOM PENTHOUSE

Unit #31-08
Area 116 Sqm / 1249 Sqft

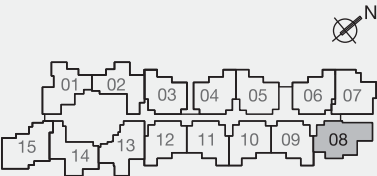


UPPER STOREY

www.huttonsgroup.com



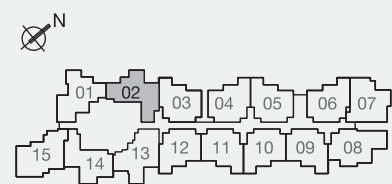
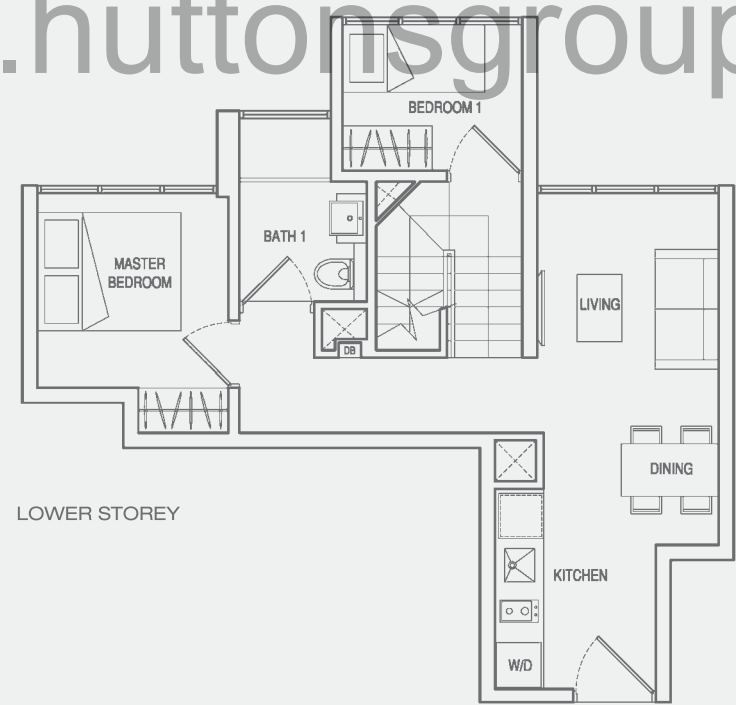
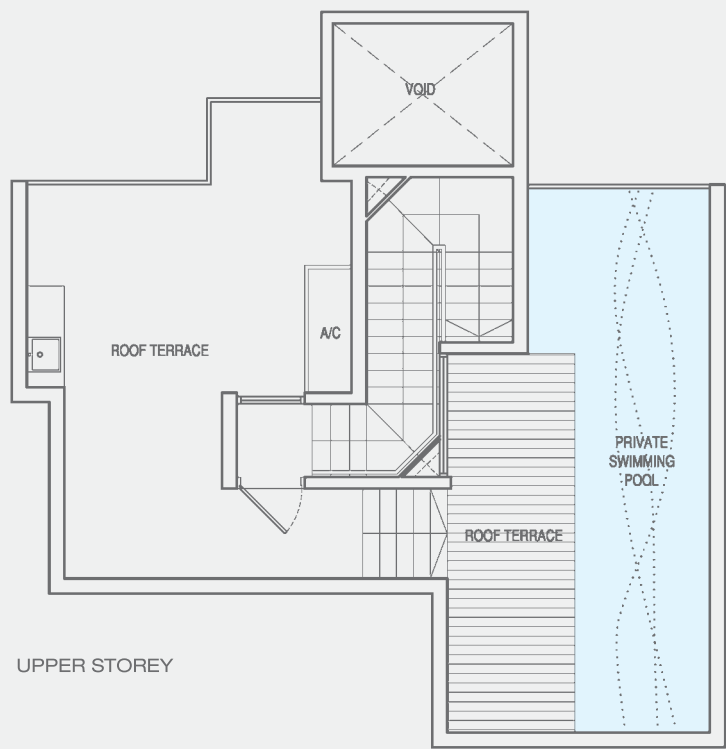
LOWER STOREY



All areas are inclusive of a/c ledge, if any. All plans are subject to amendments as approved by the relevant authorities. Floor areas are approximate measurements and subject to final survey.

TYPE PH11
2-BEDROOM PENTHOUSE

Unit #31-02
Area 111 Sqm / 1195 Sqft



All areas are inclusive of a/c ledge, if any. All plans are subject to amendments as approved by the relevant authorities. Floor areas are approximate measurements and subject to final survey.

SPECIFICATIONS

1. FOUNDATION

Bored piles and/or concrete piles and/or steel H piles and/or raft foundation.

2. SUBSTRUCTURE & SUPERSTRUCTURE

Reinforced concrete and/or steel frame.

3. WALL

- External : Common clay bricks and/or precast panel and/or reinforced concrete generally.
- Internal : Common clay bricks and/or cement blocks and/or light weight blocks and/or precast panels and/or reinforced concrete and/or dry wall generally.

4. ROOF

Flat Roof : Reinforced concrete roof with waterproofing and insulation and/or metal roofing with insulation.

5. CEILING

For Apartments

- a) Living/Dining, Master Bedroom, Bedroom, Kitchen & Balcony : Skim coat with emulsion paint generally and plaster board ceiling where applicable.
- b) Master Bathroom & Bathroom : Plaster board with emulsion paint.

6. FINISHES

- Internal Wall Finishes (For Apartments):
 - i) Living/Dining, Master Bedroom, Bedroom & Study : Cement and sand plaster and/or skim coat with emulsion paint finish.
 - ii) Master Bathroom, Bathroom & Kitchen : Compressed marble and/or homogenous tiles and/or tempered glass laid up to false ceiling height and on exposed surface only.
- Floor Finishes (For Apartments):
 - i) Living/Dining & Kitchen : Compressed marble with skirting.
 - ii) Master Bedroom, Bedroom & Study : Timber parquet and/or timber strip with timber skirting.
 - iii) Master Bathroom & Bathroom : Compressed marble.
 - iv) Balcony, Balcony (Open To Sky) & Roof Terraces (for Penthouse Units only) : Ceramics tiles and/or homogenous tiles and/or timber deck.
 - v) Private Swimming Pool (where applicable) : Mosaic tiles.

7. WINDOWS

Aluminum framed glass windows.

Note:

- a) All aluminum frames shall be powder coated and/or natural anodized finish.
- b) All windows are either side hung or top hung or bottom hung or sliding or any combination of the above mentioned.
- c) All glazing below 1m from floor level shall be tempered or laminated glass.
- d) All glazing to be plain float and/or tinted glass.

8. DOORS

- a) Main Entrance : Approved fire-rated timber door.
- b) Master Bedroom, Bedroom & Study : Timber door.
- c) Master Bathroom & Bathroom : Timber door and/or PVC door.
- d) Kitchen (where applicable) : Aluminium framed door or timber door.
- e) Balcony & Roof Terrace : Aluminum framed glass door.

Note:

- a) All aluminum frames shall be powder coated and/or natural anodized finish.
- b) Doors can either be of swing and/or sliding and/or bi-fold type with or without fixed glass panel.
- c) All glazing to be plain float and/or tinted glass.

9. IRONMONGERY

Main entrance door and other timber doors shall be provided with locksets.

10. SANITARY FITTINGS

- a) Master Bath
 - 1 shower screen with shower mixer, overhead shower & shower handset
 - 1 basin c/w tap mixer & cabinet below
 - 1 water closet
 - 1 toilet roll holder
 - 1 medicine cabinet c/w mirror
- b) Bathroom
 - 1 shower screen with shower mixer & shower handset
 - 1 basin c/w tap mixer
 - 1 water closet
 - 1 toilet roll holder
 - 1 mirror

11. ELECTRICAL INSTALLATION/TV/TELEPHONE

- Electrical wiring will be concealed conduits where possible. Where there is a false ceiling, the electrical wiring will be in surface mounted conduit in the ceiling space. Exposed trunking at a/c ledge.
- The routing of services within the apartment units shall be at the sole discretion of the Architect and Engineer.
- Cable-Readiness to comply with authorities' requirements.

12. LIGHTNING PROTECTION

Lightning Protection System shall be provided in accordance with the current edition of Singapore Code of Practice.

13. WATERPROOFING

Waterproofing to floors of kitchen, master bathroom, bathroom, roof terrace, balcony, swimming pool, pool deck, toilets and reinforced concrete flat roof where applicable.

14. PAINTING

- a) Internal Walls : Emulsion Paint.
- b) External Walls : Weather shield paint and/or spray textured coating at selected areas only.

15. DRIVEWAY AND CAR PARK

Concrete finished with floor hardener and/or perforated concrete slab and/or interlocking pavers and/or aeration slab (where applicable).

16. RECREATIONAL FACILITIES

Pool & Garden Deck @ 6

- BBQ Area
- Garden
- Sun Deck
- Lap Pool
- Wet Deck
- Waterscape
- Wading Pool

Fitness Deck @ 14

- Outdoor Fitness Space
- Gymnasium
- Veranda
- Jacuzzi
- Spa Pool
- Sun Lounges
- Garden
- Steam Room
- Waterfall Pool
- Pool Table
- Table Tennis

Sky Deck @ 22

- Meeting Room
- Lounge
- Bar Counter
- Reading Corner
- Sky Viewing Deck
- Garden
- Water Garden

17. ADDITIONAL ITEMS

- a) Wardrobes : Built-in wardrobe to all bedrooms.
- b) Kitchen Cabinets
 - i) Built-in kitchen cabinets with solid surface counter top, cooker hob and cooker hood.
 - ii) One stainless steel sink c/w sink mixer.
 - iii) Built-in microwave oven.
 - iv) Built-in integrated refrigerator.
 - v) Washer Dryer
- c) Air-conditioning to Living/Dining, Master Bedroom, Bedroom & Study.
- d) Hot Water Supply to Master Bathroom, Bathroom & Kitchen.
- e) Security : Audio intercom (from apartment to lobby only).
- f) Private Swimming Pool : For Type C8, D3 and all penthouse units only.

Note:

- 1) The brand and model of all equipment supplied shall be provided subject to market availability and the sole discretion of the Vendor.
- 2) Layout/location of fan coil units, electrical points, telephone points and door swing positions are subject to Architect's sole discretion and final design.
- 3) The Purchaser is liable to pay annual fee, subscription fee and such other fees to the Starhub Cable Vision Ltd (SCV) and/or Internet Service Provider (ISP) or any other relevant party or any other relevant authorities. The Vendor is not responsible to make arrangements with any of the said parties for the service connection for their respective subscription channels and/or internet access.
- 4) If the Purchaser requires internet access, the Purchaser will have to make direct arrangements with the Internet Service Provider and/or such relevant entities/authorities for internet services to the unit and to make all necessary payments to the Internet Service Provider and/or the relevant entities/authorities.
- 5) Where warranties are given by the manufacturers and/or contractors and/or suppliers of any of the equipment and/or appliances installed by the Vendor at the unit, the Vendor shall assign to the Purchaser such warranties at the time when possession of the unit is delivered to the Purchaser.
- 6) For cyclical maintenance work to be carried out to the building facade, owners shall allow access to the maintenance team.
- 7) While every reasonable care has been taken in preparing this brochure and the plans attached, the Developer and its agents cannot be held responsible for any inaccuracies therein. All statements, specifications and plans are believed to be correct but not to be regarded as statements or representations of fact. Visual representations, illustrations, photographs and renderings are intended to portray only impressions of the development and cannot be regarded as representation of facts. Photographs or images contained in this brochure do not necessarily represent as built standard specifications. All information and specifications are current at the time of press and are subject to change as may be required and cannot form part of an offer or contract. All plans are subject to any amendments approved by the building authorities. Floor areas are approximate measurements and subject to final survey. The choice of brand and model of fittings, equipment, installation and appliances supplied shall be at the sole discretion of the Vendor.

www.huttonsgroup.com

DEVELOPED BY



**70
Shenton
Pte Ltd**

Name of Project: **Eon Shenton** Developer: **70 Shenton Pte Ltd (RCB No: 201006166W)**
Developer's Licence No.: **C0835** Tenure of Land: **99 years commencing from 6 October 2011** Lot No.: **Lot 415P and 1261A PT TS23 at 70 Shenton Way** Expected Date of TOP: **31 December 2019** Expected Date of Legal Completion: **31 December 2022**
Building Plan No.: **A1276-00507-2010-BP01 dated 13 March 2012**

While every reasonable care has been taken in preparing this brochure and in constructing the models and showflats, the Developer and the Marketing Agents cannot be held responsible for any inaccuracies or omissions. Visual representations, models, showflats displays and illustrations, photographs, art renderings and other graphic representations and references are intended to portray only artist's impressions of the development and cannot be regarded as representations of fact. The property is subject to final inspection by relevant authorities to comply with the current code of practice.

All information, specifications, renderings, visual representations and plans are correct at the time of publication and are subject to change as may be required by us and/or the competent authorities and shall not form part of any offer and contract nor constitute any warranty by us and shall not be regarded as statements or representations of fact. All plans are subject to amendments as directed and/or approved by the building authorities. All areas are approximate measurements only and subject to final survey. The Sale & Purchase Agreement shall form the entire agreement between us as the Developer and the Purchaser and shall supercede all statements, representations or promises made prior to the signing of the Sale & Purchase Agreement and shall in no way be modified by any statements, representations or promises made by us or the Marketing Agents.

www.huttonsgroup.com